

# Yalumba 30

 5
  3
  2

The Yalumba 30, a distinguished 5-bedroom, 3-bathroom residence, is perfected for a 14m+ block, offering an exemplary double-storey floor plan that harmonises shared experiences with individual privacy. Featuring 3 living spaces and a 2-car garage, its layout showcases an expansive kitchen and living area extending to an alfresco, making it the heart of family gatherings and entertainment. Upstairs, each bedroom, including a master suite with an ensuite and retreat, affirms a commitment to comfort, complemented by walk-in robes, embodying the essence of sophisticated and accommodating family living.

ELEVATE

House Area

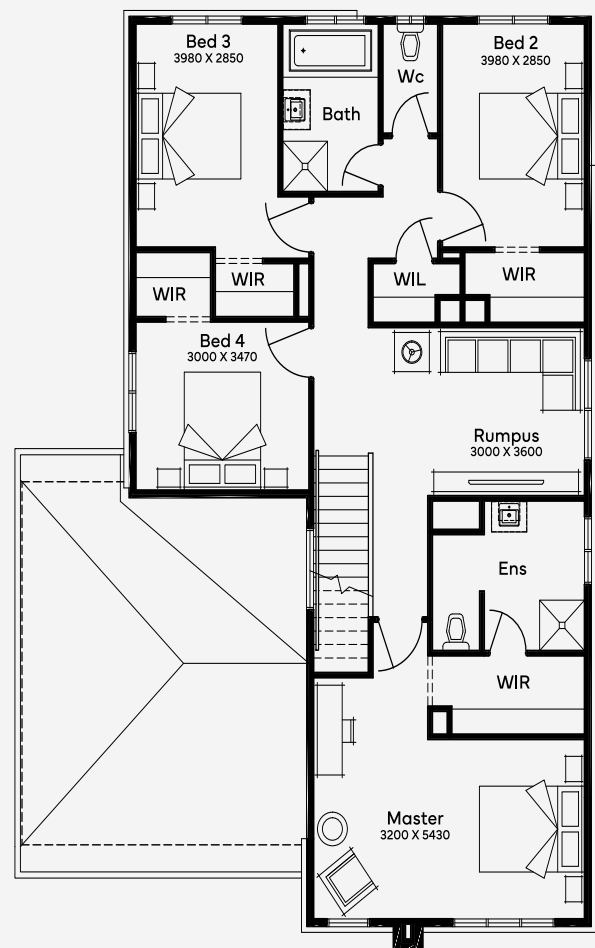
**284.46 m<sup>2</sup>**

Min Lot Size (WxL)

**14m x 25m**

14M+ LOT WIDTH

DOUBLE STOREY



Please note: Some floorplan option combinations may not be possible together. Please speak to a New Home Specialist.  
Base price shown as of 25 November 2024 and is subject to change.

  
 How Australia Homes