

# Wilson 24



The Wilson 24, ideal for 14m+ blocks, offers a floor plan with 4 bedrooms and 2 bathrooms, emphasising a seamless blend of style and function. Its heart is a bright, airy kitchen, transitioning into a capacious living area and out to an alfresco designed for entertainers. The home includes a versatile theatre room, enhancing leisure options. Bedrooms, including a master suite, provide serene retreats with thoughtful zoning to ensure restful privacy, making every end of the day a tranquil experience.

ELEVATE

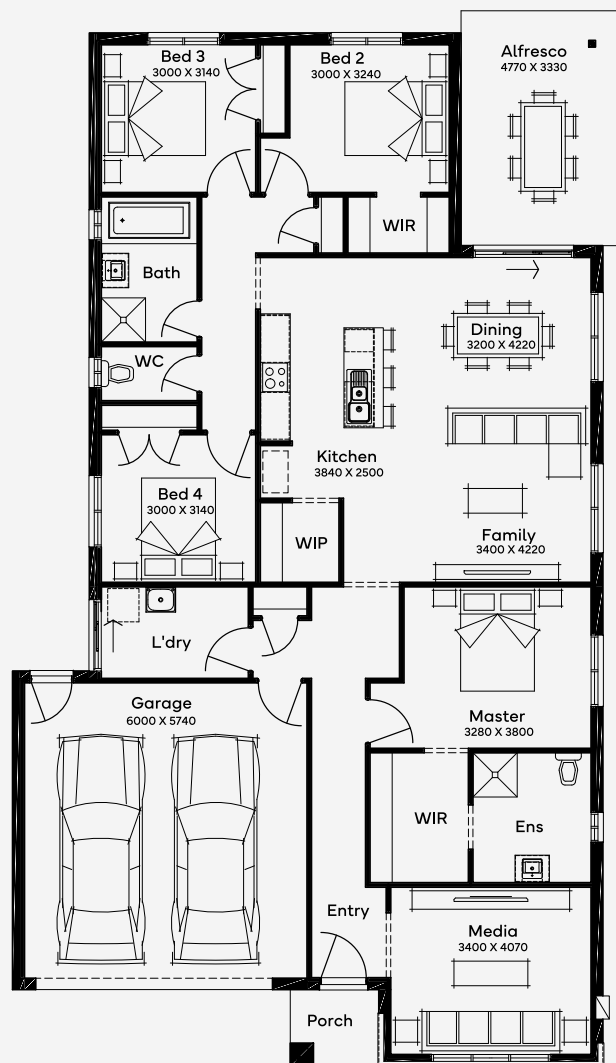
House Area

**246.12 m<sup>2</sup>**

Min Lot Size (WxL)

**14m x 28m**

14M+ LOT WIDTH



Please note: Some floorplan option combinations may not be possible together. Please speak to a New Home Specialist.  
Base price shown as of 07 October 2024 and is subject to change.