

Williamson 24

ELEVATE

4 2 2

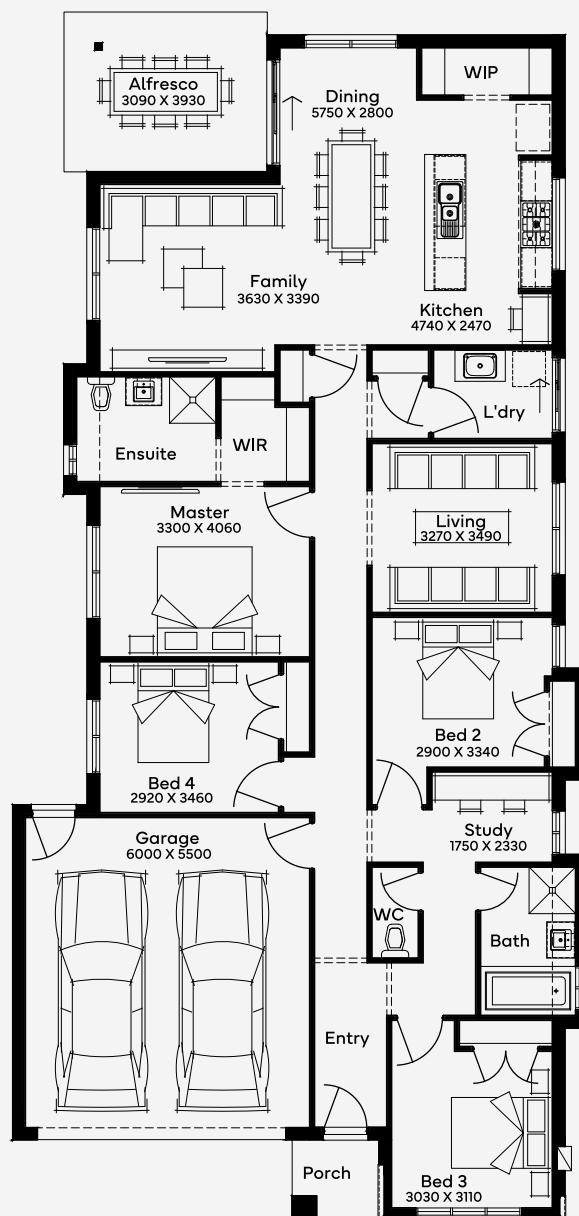
House Area

221.16 m²

Discover the spacious Williamson 24 floorplan, where modern design meets everyday comfort. This 4-bedroom, 2-bathroom beautiful home design offers a spacious master suite with a walk-in robe and ensuite, while the open-plan kitchen, living, and dining areas create the perfect space for family time or entertaining. Need a quiet retreat? The separate living room has you covered. The secondary bedrooms are perfectly positioned at the front of the home, surrounding a main bathroom, WC and study space ? ideal for older teens. With a double garage for all your gear and plenty of storage, this single-storey home is as practical as it is stylish. Designed to suit 12.5m+ wide blocks, the Williamson 24 is all about making life easier - and more beautiful.

12.5M+ LOT WIDTH

SINGLE STOREY



Please note: Some floorplan option combinations may not be possible together. Please speak to a New Home Specialist.
Base price shown as of 03 February 2026 and is subject to change.

SIMONDS
How Australia Homes