

Wattleseed 22

 4
  2
  2

The Wattleseed 22, designed for 12.5m+ blocks, is a 4-bedroom, 2-bathroom home with a 2-car garage, perfect for families seeking a blend of comfort and modern living over a single-story. The open-plan floor plan unites the serene alfresco with the impressive kitchen and meals area, creating a harmonious flow of natural light. The master bedroom, located at the front with an ensuite and walk-in wardrobe, ensures privacy. This versatile design can adapt to a variety of needs, with options for a media room, kids' retreat, or study, making it a flexible choice for different lifestyles.

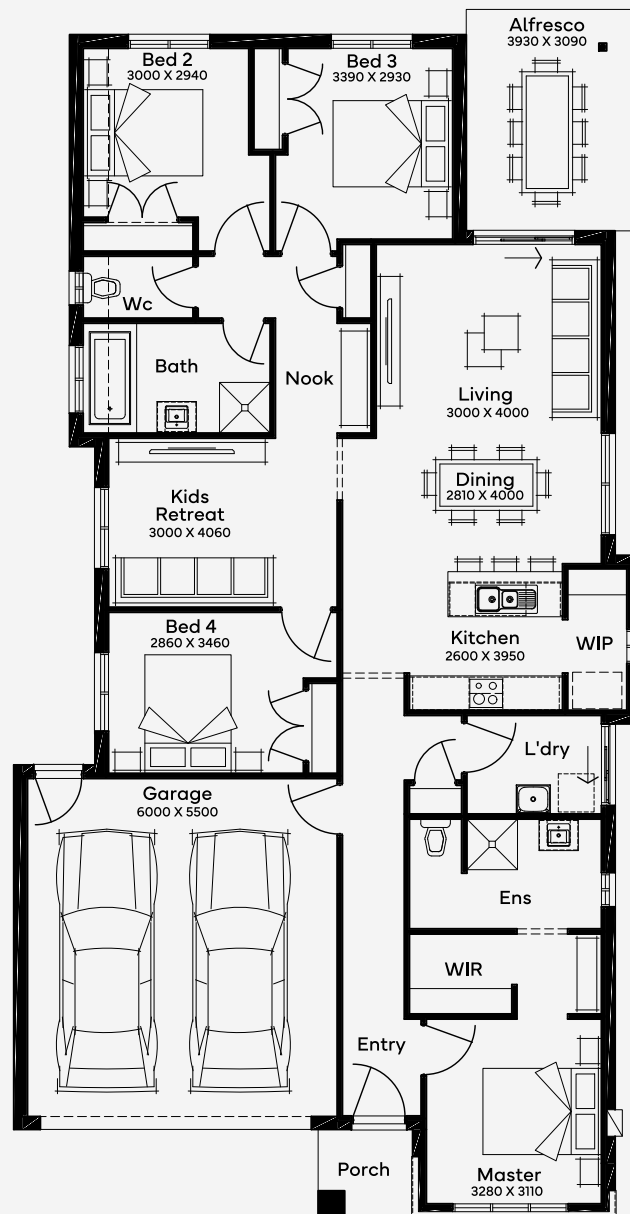
EMERGE

House Area

204.47 m²

Min Lot Size (WxL)

12.5m x 28m



Please note: Some floorplan option combinations may not be possible together. Please speak to a New Home Specialist.
Base price shown as of 17 September 2025 and is subject to change.

SIMONDS
How Australia Homes

12.5M+ LOT WIDTH

SINGLE STOREY