

Walkerville 38

\$469,500



ELEVATE

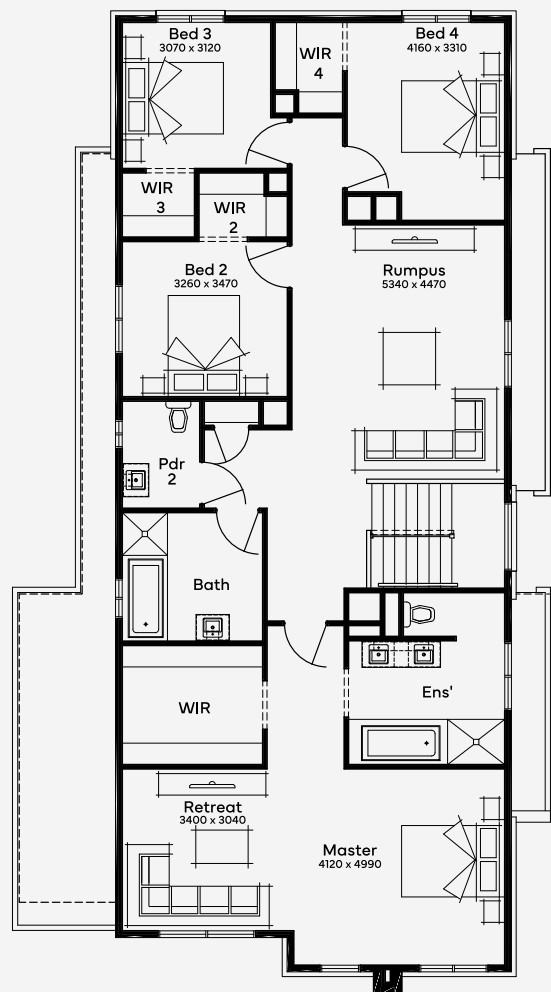
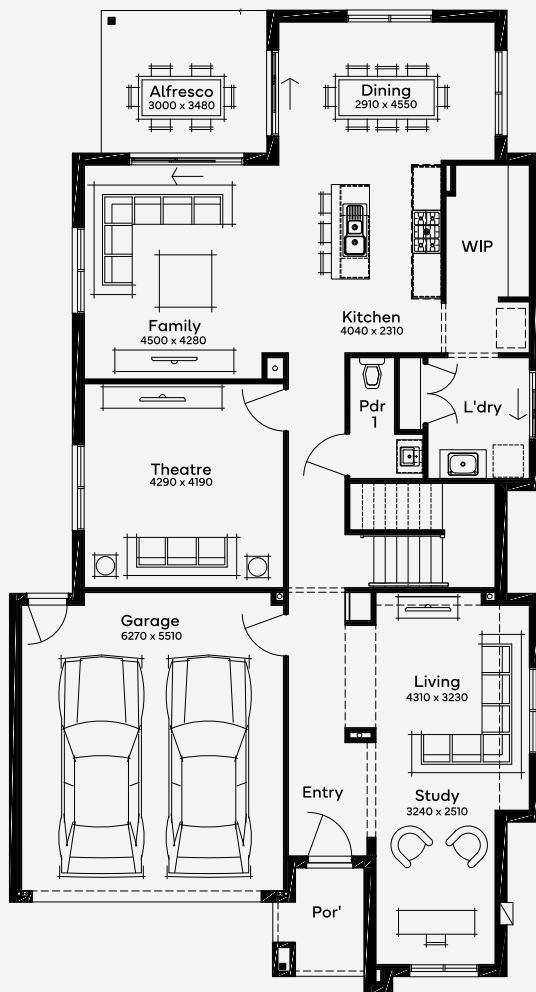
The Walkerville 38, a double-storey 4-bedroom, 2-bathroom home with 4 living spaces, offers luxurious space for active, entertaining families. It features four large areas for gathering and relaxation, making it a statement of success and community. The master bedroom is a lavish retreat, providing ample space for couples to escape the everyday. This floor plan is designed to cater to the most lavish lifestyles, reflecting a blend of comfort and luxury.

House Area

357.78 m²

Min Lot Size (WxL)

14m x 28m



Please note: Some floorplan option combinations may not be possible together - please speak to a New Home Specialist.

Base price shown as of 20 May 2024 and is subject to change.

SIMONDS
How Australia Homes

14M+ LOT WIDTH

DOUBLE STOREY