

# Villa Messina 53

 4     4     2

The Villa Messina 53 house design, tailored for a 15m+ block, showcases an exquisite blend of 4 bedrooms, 3 bathrooms, and a 2 car garage, crafted for grand family living. This double-storey floor plan is an ode to spaciousness, featuring a master bedroom with a private balcony, a generous porch, and a welcoming alfresco area seamlessly connected to a sprawling kitchen, dining, and relaxation zone. Complemented by a library and secluded parent's space, this home captures the essence of a sophisticated, open-air lifestyle, making every moment a celebration of togetherness.

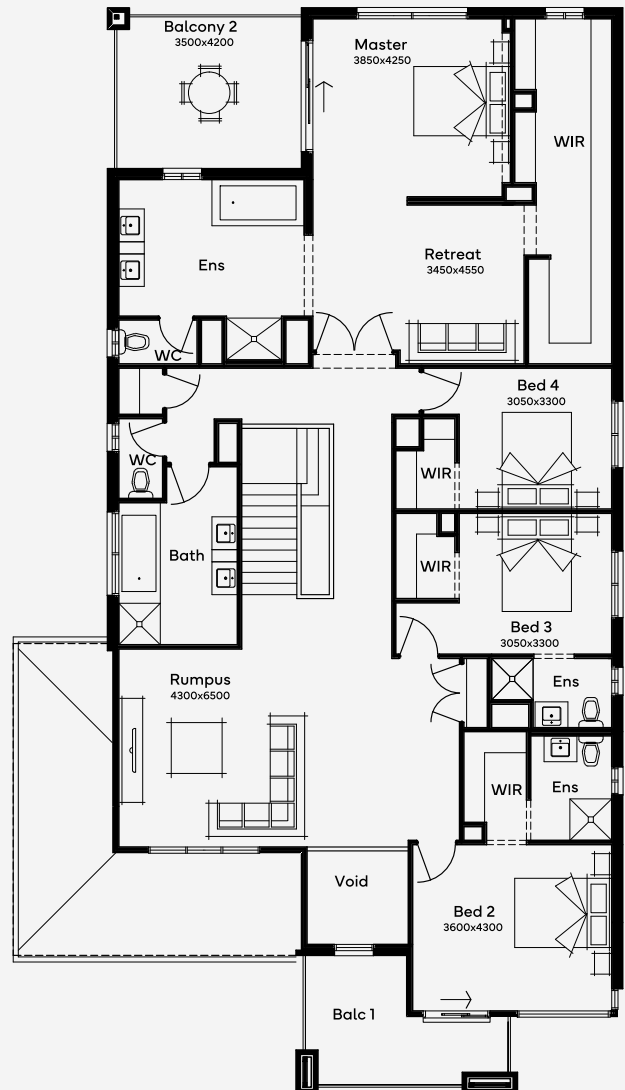
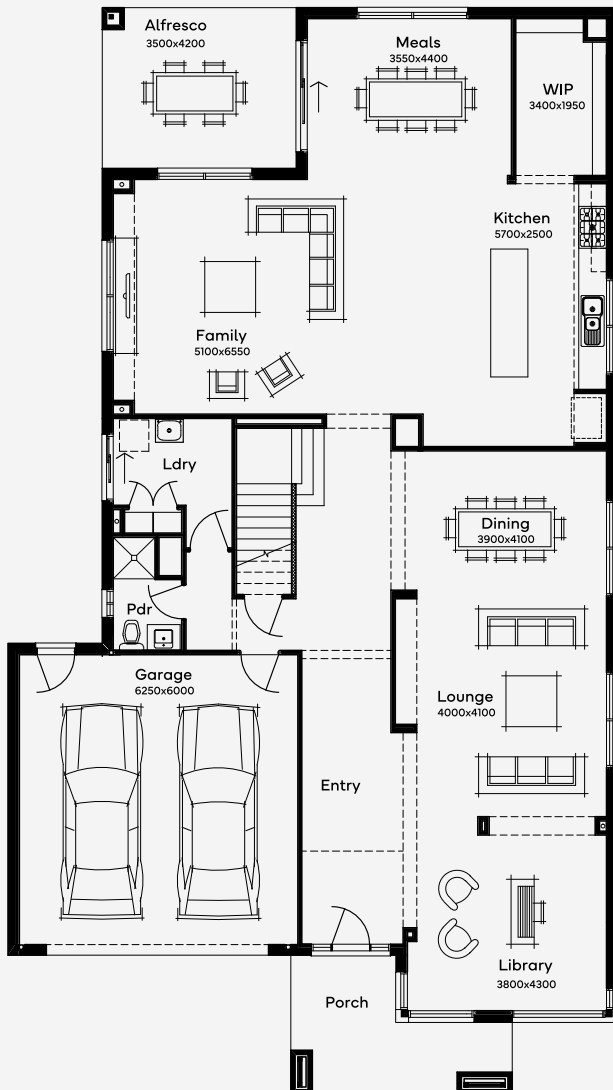
ELITE

House Area

493.64 m<sup>2</sup>

Min Lot Size (WxL)

15m x 35m



Please note: Some floorplan option combinations may not be possible together. Please speak to a New Home Specialist.  
Base price shown as of 02 August 2025 and is subject to change.



**SIMONDS**  
How Australia Homes