

Victor 29



Suitable for 16m+ blocks, the Victor 29 is a 4-bedroom, 2-bathroom home featuring a 2-car garage and 3 living spaces. This single-storey house design offers a seamless blend of work, study, and living areas, all on one level. The master bedroom, a serene retreat, is strategically located at the rear. Thoughtful touches include ample built-in storage and a generous walk-in pantry. The Victor 29 stands out as a smart choice for families desiring a mix of space, practicality, and contemporary style.

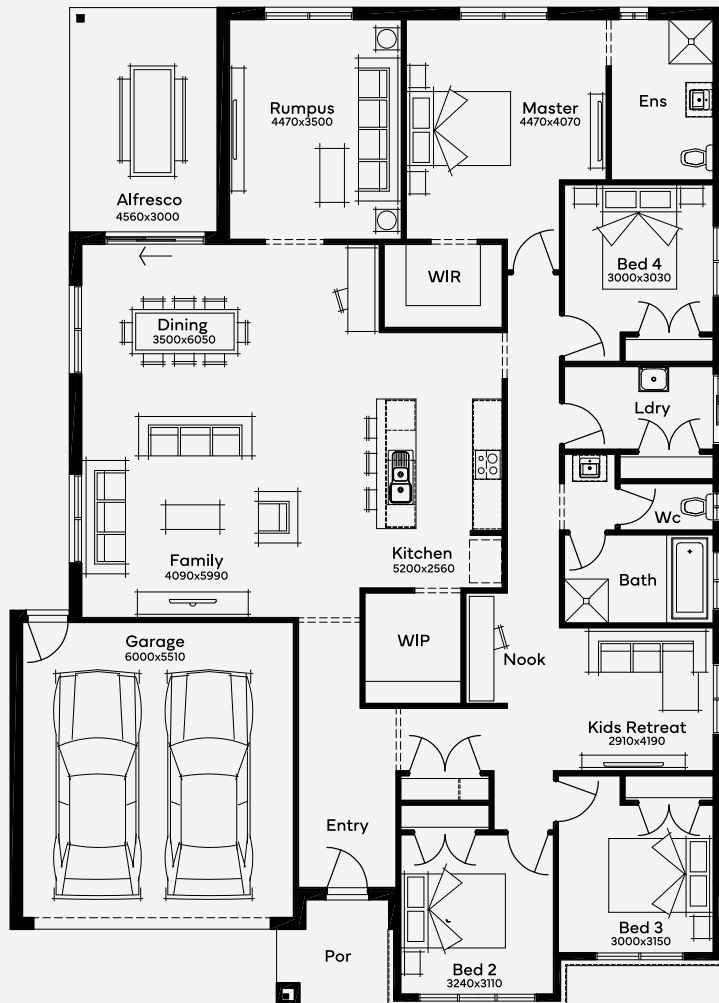
ELEVATE

House Area

268.74 m²

Min Lot Size (WxL)

16m x 30m



Please note: Some floorplan option combinations may not be possible together - please speak to a New Home Specialist.
Base price shown as of 08 September 2024 and is subject to change.

16M+ LOT WIDTH

SINGLE STOREY