

Vasse 27

3 2 2

The Vasse 27, perfect for 12.5m+ blocks, is a 3-bedroom, 3-bathroom double-storey house design with a 2-car garage. It offers a formal sitting area, a study, and a separate laundry on the ground floor. The expansive shared zone includes a designer kitchen, living, and dining spaces opening to an alfresco. Upstairs, the floor plan features a private master suite, secondary bedrooms, a shared bathroom, and a children's retreat, creating a balance of communal and private spaces.

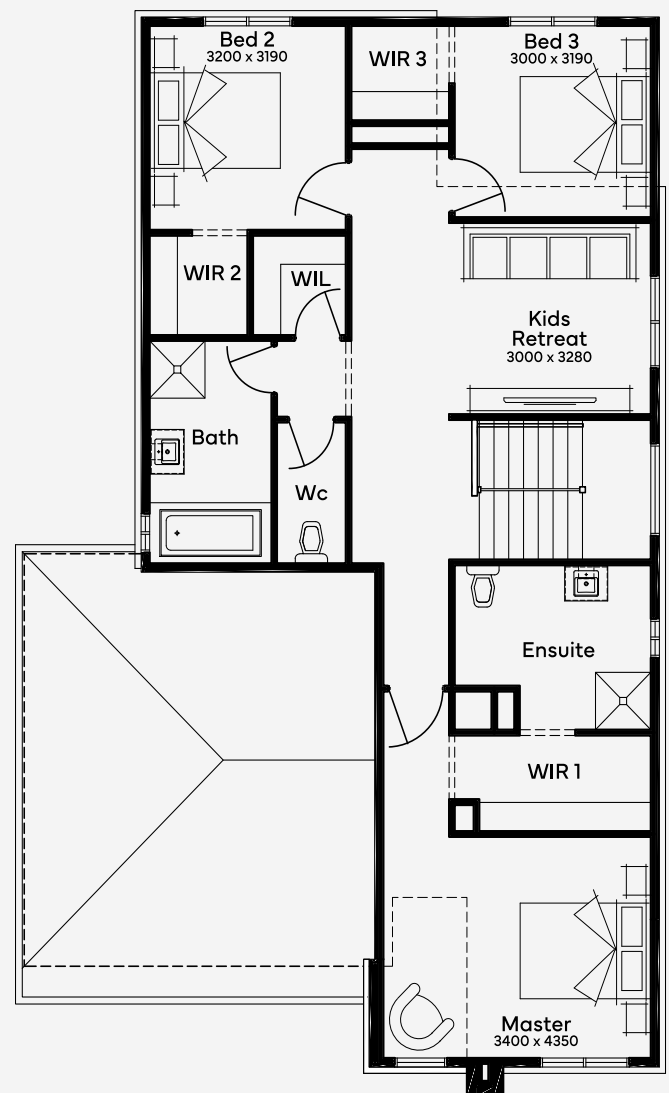
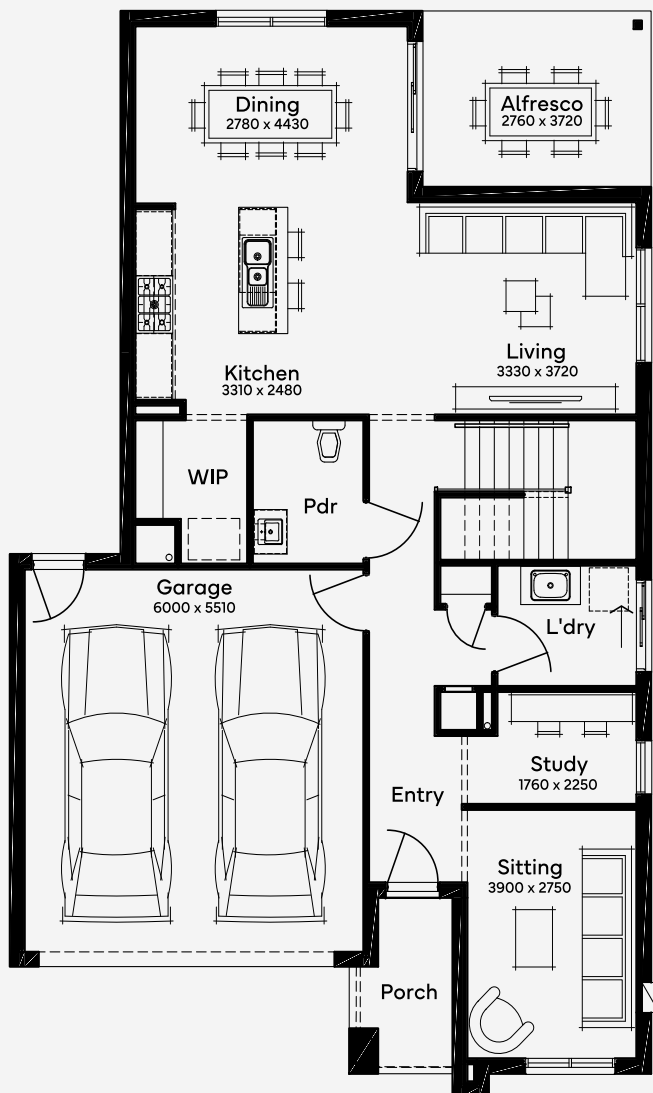
ELEVATE

House Area

256.79 m²

Min Lot Size (WxL)

12.5m x 25m



Please note: Some floorplan option combinations may not be possible together. Please speak to a New Home Specialist.
Base price shown as of 22 January 2026 and is subject to change.

SIMONDS
How Australia Homes

12.5M+ LOT WIDTH

DOUBLE STOREY