

# Vasse 24

3 2 2

The Vasse 24, featuring 3 bedrooms and 3 bathrooms with a 2-car garage over double-storeys, is designed for a 12.5m+ block. The front sitting room and study provide peaceful escapes, while the kitchen, dining, and living areas form the vibrant hub of the home. Upstairs, the spacious master bedroom with an ensuite and walk-in robe overlooks the street, offering a serene haven. The additional bedrooms with walk-in robes are thoughtfully designed, especially for families with teenagers or tenants.

EMERGE

House Area

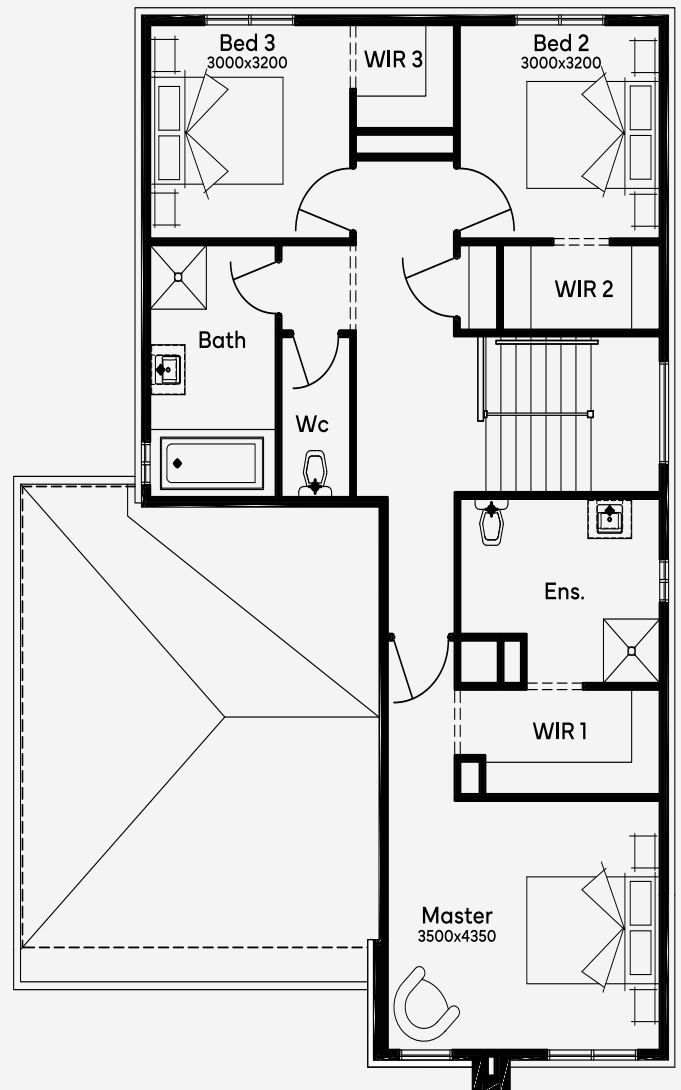
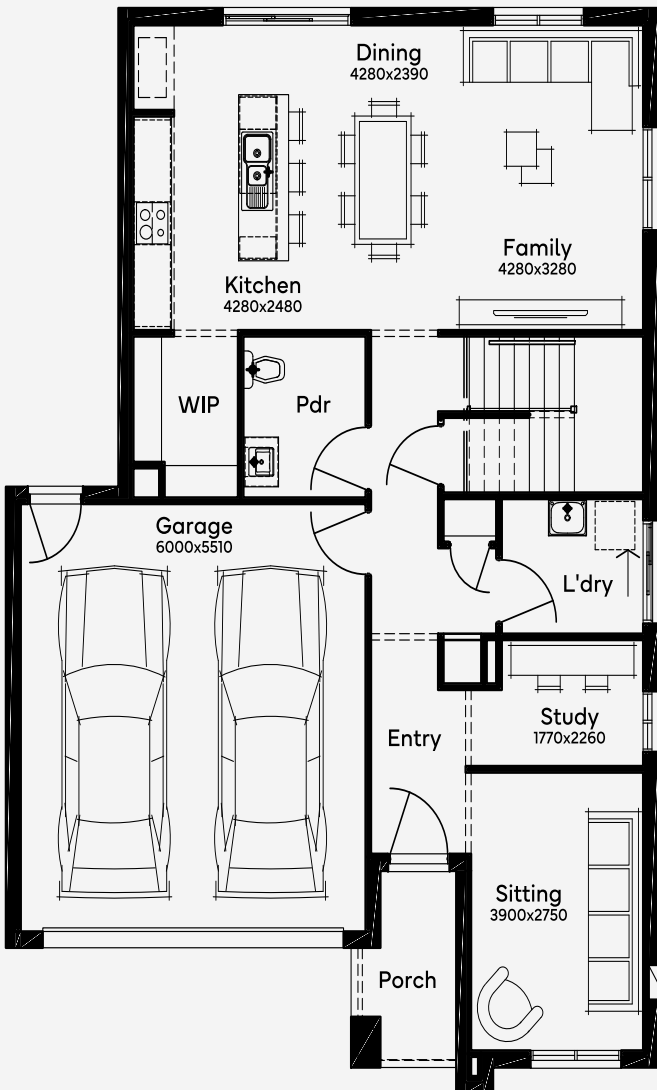
226.25 m<sup>2</sup>

Min Lot Size (WxL)

12.5m x 21m

12.5M+ LOT WIDTH

DOUBLE STOREY



Please note: Some floorplan option combinations may not be possible together. Please speak to a New Home Specialist.  
Base price shown as of 22 November 2024 and is subject to change.

**SIMONDS**  
How Australia Homes