

Turner 22

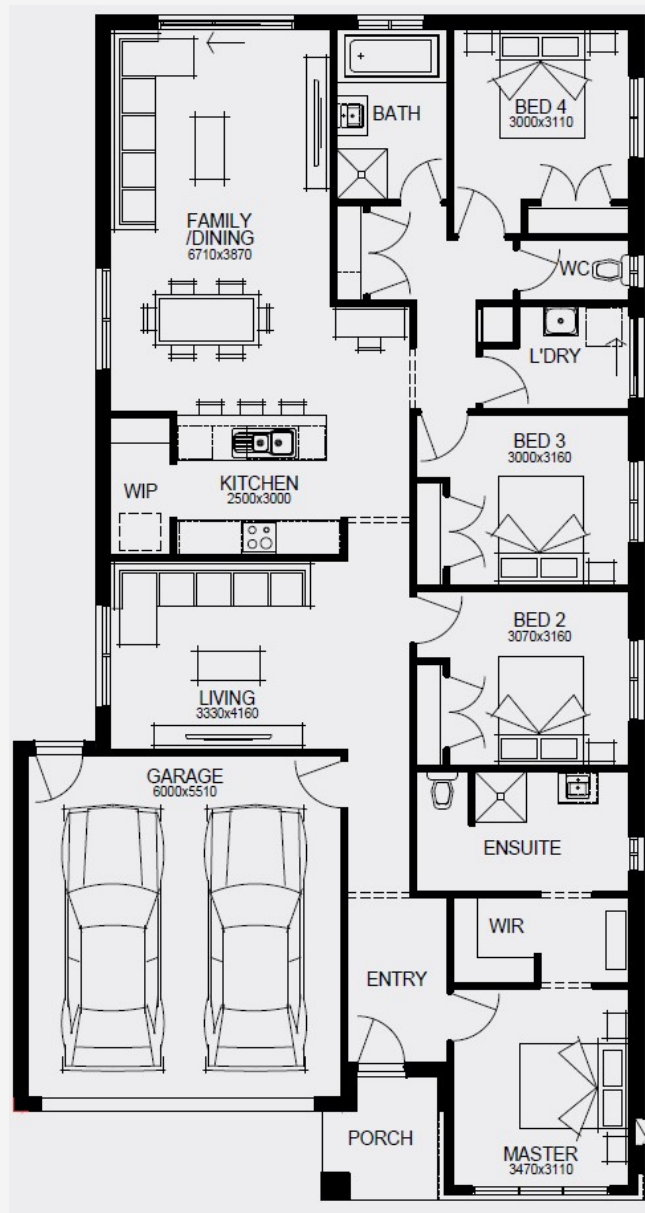
READY NOW



House Area

202.13 m²

The 4-bedroom, 2-bathroom single-storey Turner 22, perfect for 12.5m+ blocks, boasts a thoughtful floor plan that starts with an inviting central hallway. The contemporary kitchen, featuring bench seating and a walk-in pantry, flows through to shared dining and family area, before continuing out to the back garden. The master suite sanctuary is nestled at the front of the home, while the dedicated children's wing is conveniently secluded from the main living areas. A second living area nestled in the center of the home and a 2 car garage complete this well thought-out floor plan.



12.5M+ LOT WIDTH

SINGLE STOREY

Please note: Some floorplan option combinations may not be possible together. Please speak to a New Home Specialist.
Base price shown as of 23 November 2024 and is subject to change.

