

Tamworth 32

 4
  2
  2

ELEVATE

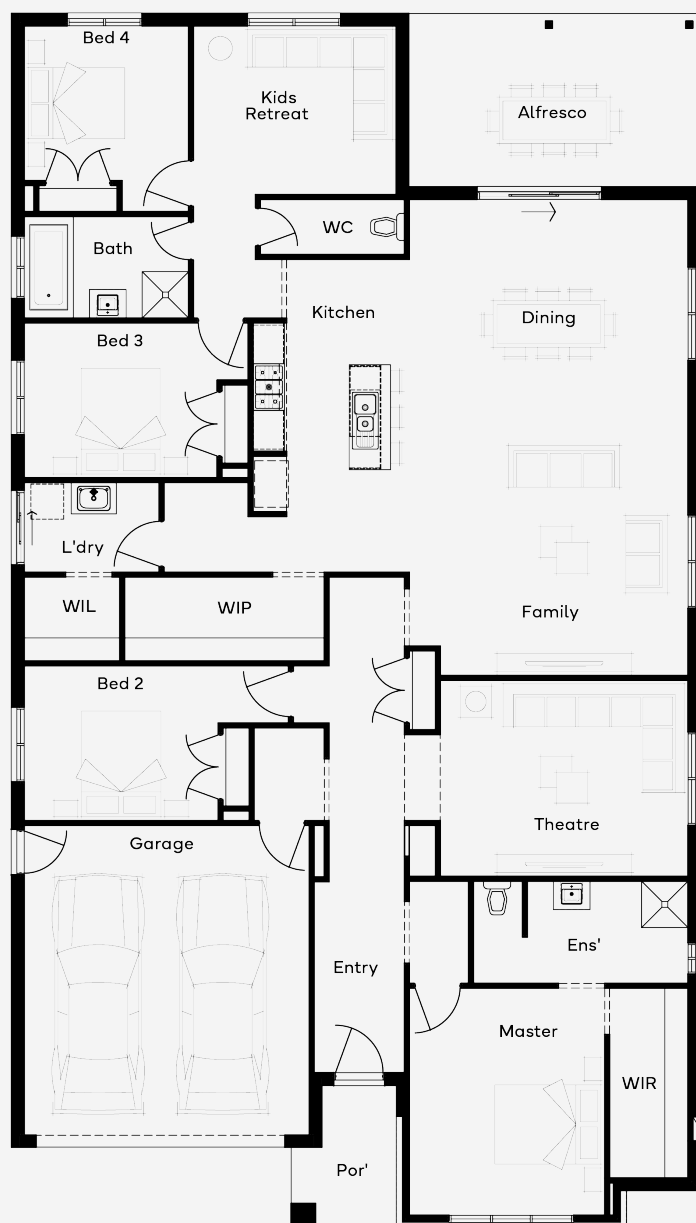
House Area

303.75 m²

Min Lot Size (WxL)

16m x 32m

The Tamworth 32, a 4-bedroom, 2-bathroom home with 3 living spaces, offers a fresh open-plan single-storey design. The inviting kitchen, living, and dining area provide a communal space for family time. The kids' wing includes a retreat leading to the alfresco. The master suite, located at the front for privacy, features a wide ensuite and walk-in robe, adding a luxurious touch. This floor plan is ideal for families seeking both communal and private spaces.



Please note: Some floorplan option combinations may not be possible together. Please speak to a New Home Specialist.
Base price shown as of 24 May 2025 and is subject to change.


SIMONDS
 How Australia Homes

16M+ LOT WIDTH

SINGLE STOREY