

# Sutcliffe 51

5 4 2

ELITE

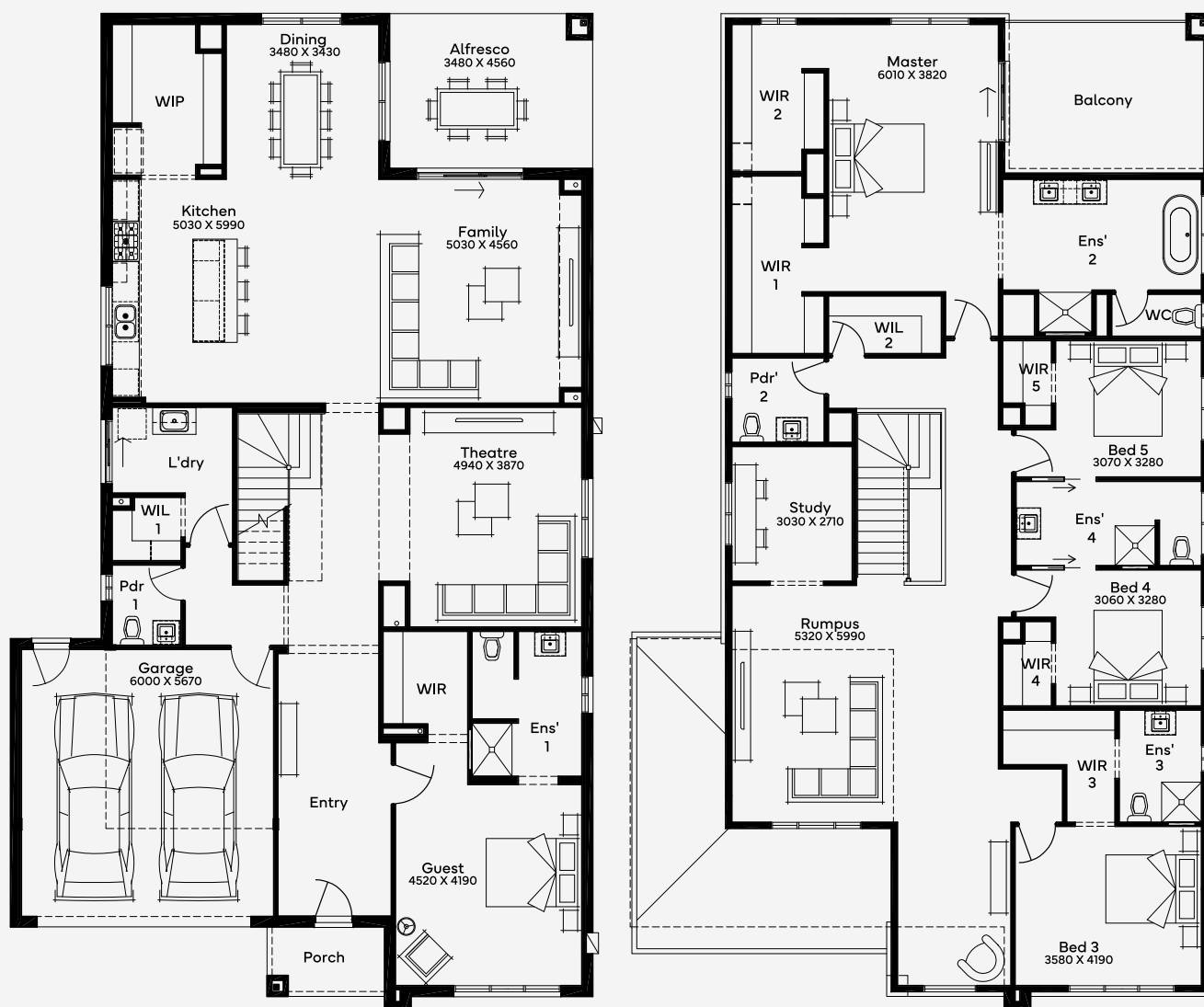
House Area

471.43 m<sup>2</sup>

Min Lot Size (WxL)

15m x 32m

Step into the Sutcliffe 51 double-storey home design for luxury living at its best. Designed for 15m+ blocks, this 5-bedroom, 4-bathroom, 2-car garage family floor plan delivers comfort and excellence throughout its spacious layout. Its key features start with the downstairs guest suite off the entry - ideal for guests, adult children or multigenerational living. The central theatre room delivers versatile living options, before moving through to the free-flowing kitchen, dining and indoor-outdoor living space that is undoubtedly the heart of the home. Upstairs, the master suite delivers access to the balcony, double walk-in robes and a luxury ensuite, while the secondary bedrooms have ensuites, walk-in robes, a study and rumpus all to the themselves.



Please note: Some floorplan option combinations may not be possible together. Please speak to a New Home Specialist.  
Base price shown as of 16 August 2025 and is subject to change.

**SIMONDS**  
How Australia Homes