

Smithfield 25

 4
  2
  2

Smithfield 25 is a single-storey home design showcasing 4 bedrooms, 2 bathrooms, and a 2-car garage, fitting seamlessly on narrow blocks. This house design is engineered for efficiency and style, offering a cozy yet spacious environment for families or investors. With a focus on open-plan living and smart space utilisation, it's an excellent choice for those starting their home journey or seeking a smart downsize without sacrificing comfort.

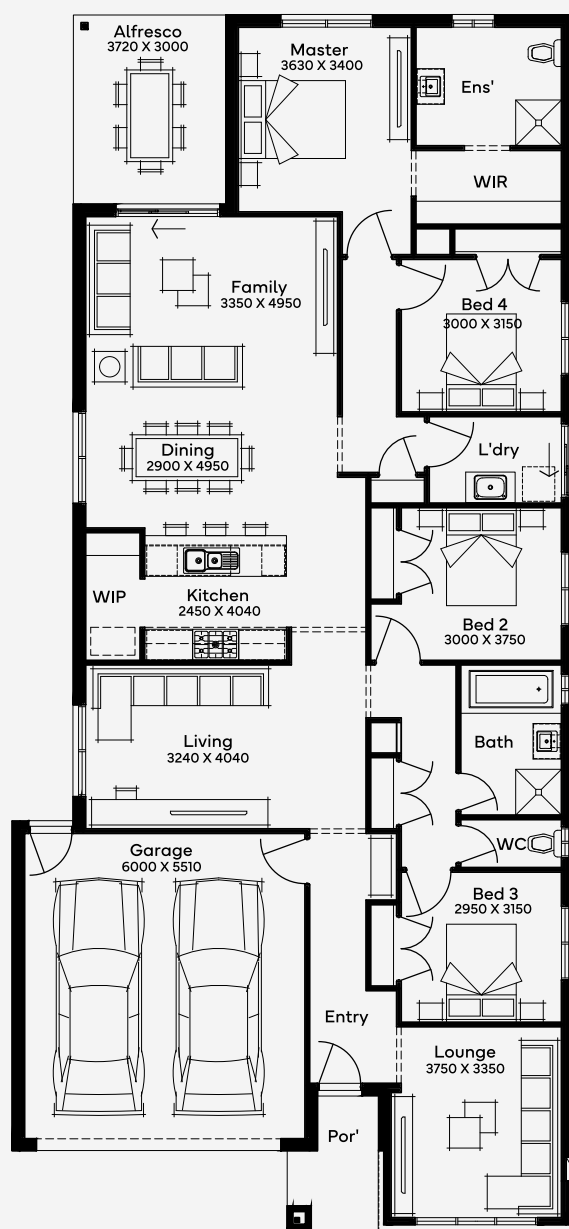
ELEVATE

House Area

235.86 m²

Min Lot Size (WxL)

12.5m x 32m



Please note: Some floorplan option combinations may not be possible together. Please speak to a New Home Specialist.
Base price shown as of 24 January 2026 and is subject to change.

SIMONDS
How Australia Homes

12.5M+ LOT WIDTH

SINGLE STOREY