

# Rosewood 38



ELEVATE

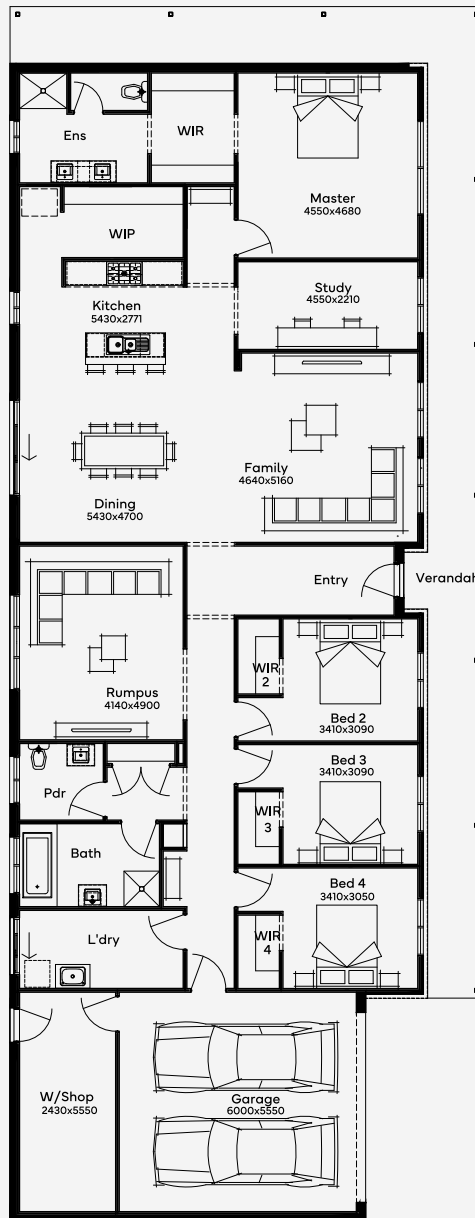
House Area

**415.65 m<sup>2</sup>**

Min Lot Size (WxL)

**32m x 18m**

Offers elegance and space in harmony - perfect for all families. Rosewood 38 stands out with its single-storey layout, offering 4 bedrooms, 2 bathrooms, ample living spaces, and a 2-car garage. This home design is perfect for those seeking a modern architectural style without compromising space. Suitable for a wide range of audiences, from upsizers to investors, it's designed to cater to the needs of growing families, ensuring comfort and style in every corner.



32M+ LOT WIDTH

SINGLE STOREY

Please note: Some floorplan option combinations may not be possible together. Please speak to a New Home Specialist.  
Base price shown as of 24 November 2024 and is subject to change.

