

Rosewood 34



ELEVATE

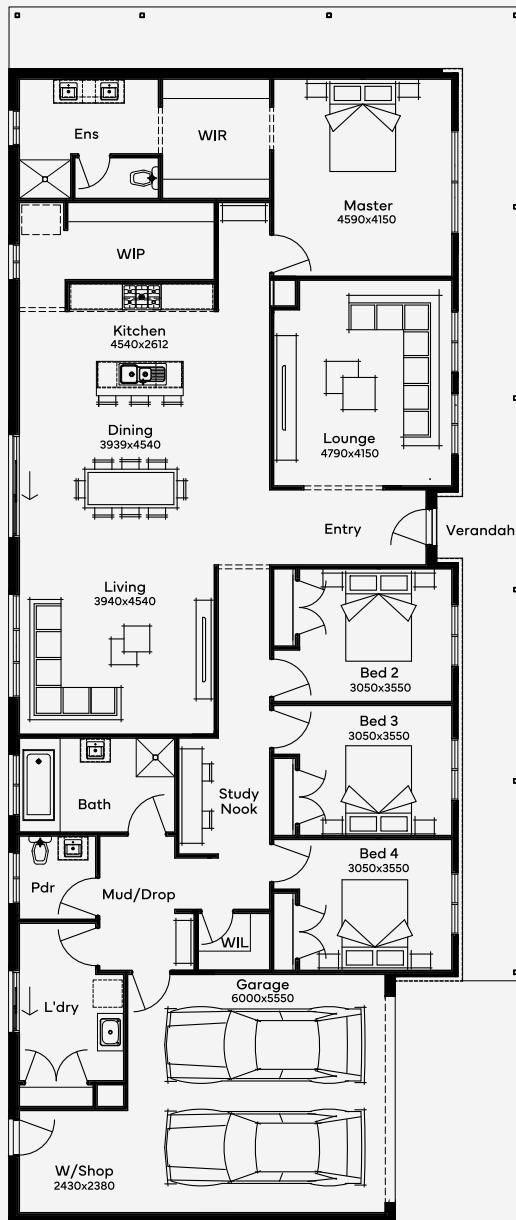
House Area

375.36 m²

Min Lot Size (WxL)

30m x 18m

The Rosewood 34 home design accentuates family living with 4 bedrooms, 2 bathrooms, and a generous 2-car garage. This single-storey house plan is designed for families seeking a blend of sophistication and functionality, featuring spacious living areas and thoughtful separation of private spaces. Suited for various lot sizes, it's an ideal choice for those upgrading to a luxurious, yet practical lifestyle.



30M+ LOT WIDTH

SINGLE STOREY

Please note: Some floorplan option combinations may not be possible together. Please speak to a New Home Specialist.
Base price shown as of 23 November 2024 and is subject to change.

