

Rosemead 21



ELEVATE

House Area

199.7 m²

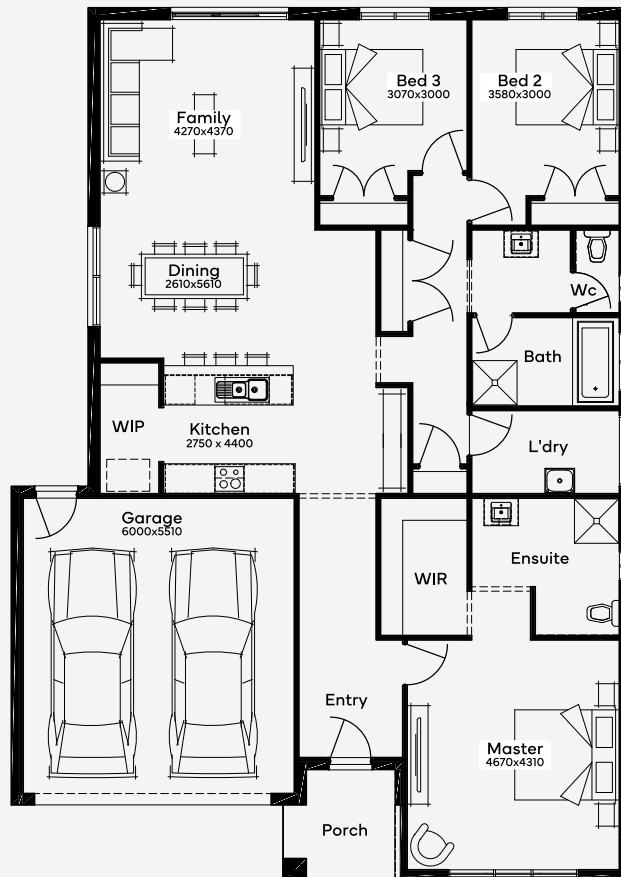
Min Lot Size (WxL)

14m x 28m

Ideal for 14m+ lots, the Rosemead 21 offers a 3-bedroom, 2-bathroom layout with a 2-car garage. This single-storey house plan is a testament to simple yet customisable living. The master bedroom, situated at the front, is generously sized with a modern ensuite and walk-in robe. Two sizable bedrooms at the rear ensure privacy and comfort. The open-plan living and dining areas create a harmonious flow, overlooking a charming courtyard. Abundant storage is a key feature, with multiple linen cupboards, a walk-in pantry, and built-in cupboards in every room, making the Rosemead 21 a practical and inviting home suitable for the whole family.

14M+ LOT WIDTH

SINGLE STOREY



Please note: Some floorplan option combinations may not be possible together. Please speak to a New Home Specialist.
Base price shown as of 18 October 2024 and is subject to change.

