

# Rosella 31

4 3 2

The Rosella 31 home design, unfolding on a single level, offers 4 bedrooms, 3 bathrooms, and a 2-car garage, making it an exceptional choice for families seeking a blend of luxury and practical living. This house plan excels in providing spacious communal areas while ensuring personal retreats for all. Ideal for Knockdown Rebuild or upscale first home buyers, its thoughtful layout maximises indoor-outdoor flow, catering to the modern desire for expansive yet intimate family environments.

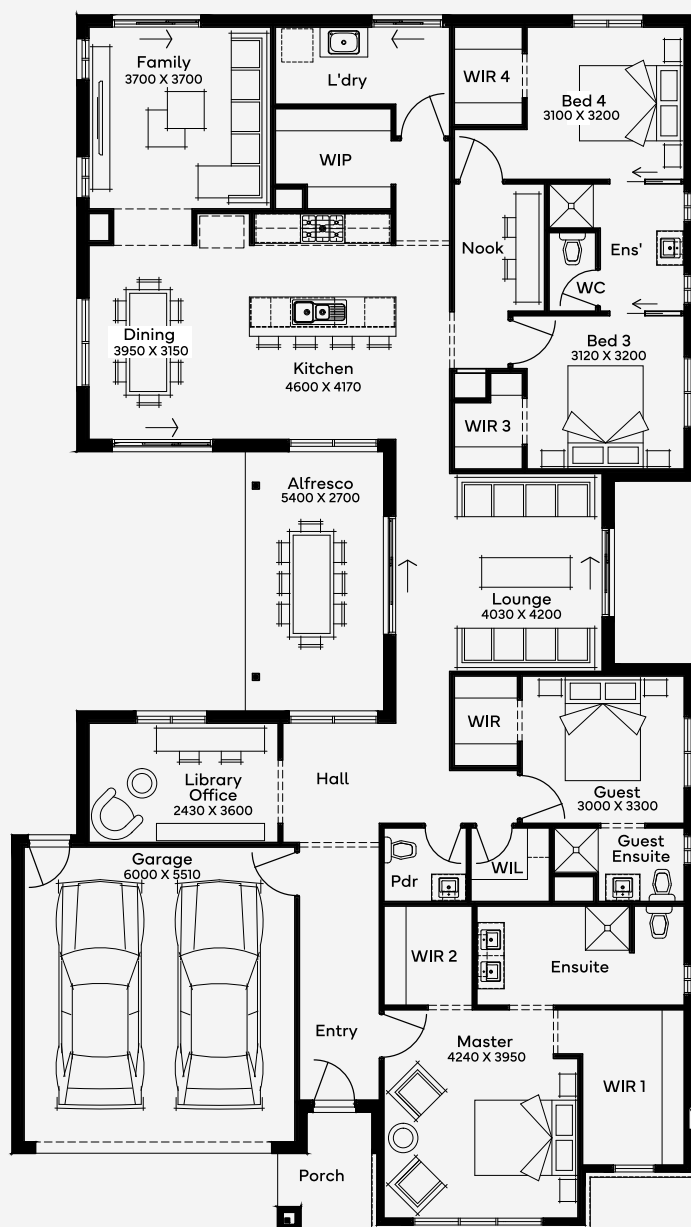
ELEVATE

House Area

286.62 m<sup>2</sup>

Min Lot Size (WxL)

15.24m x 32m



Please note: Some floorplan option combinations may not be possible together. Please speak to a New Home Specialist.  
Base price shown as of 29 August 2025 and is subject to change.

**SIMONDS**  
How Australia Homes