

Rayner 32

 4
  2
  2

The exceptional Rayner 32, a 4-bedroom, 2-bathroom, 2-car garage, single-storey home design is crafted for 16m+ blocks. Featuring a spacious open plan kitchen with a walk-in pantry, a large family area, and a formal dining space, this home is perfect for modern living. A private theatre room and kids retreat provide versatile spaces for relaxation and play. The luxurious master suite includes a walk-in robe and ensuite, while the expansive alfresco area creates a seamless indoor-outdoor flow, ideal for hosting gatherings. Experience the perfect blend of style, space, and functionality in this impressive family home.

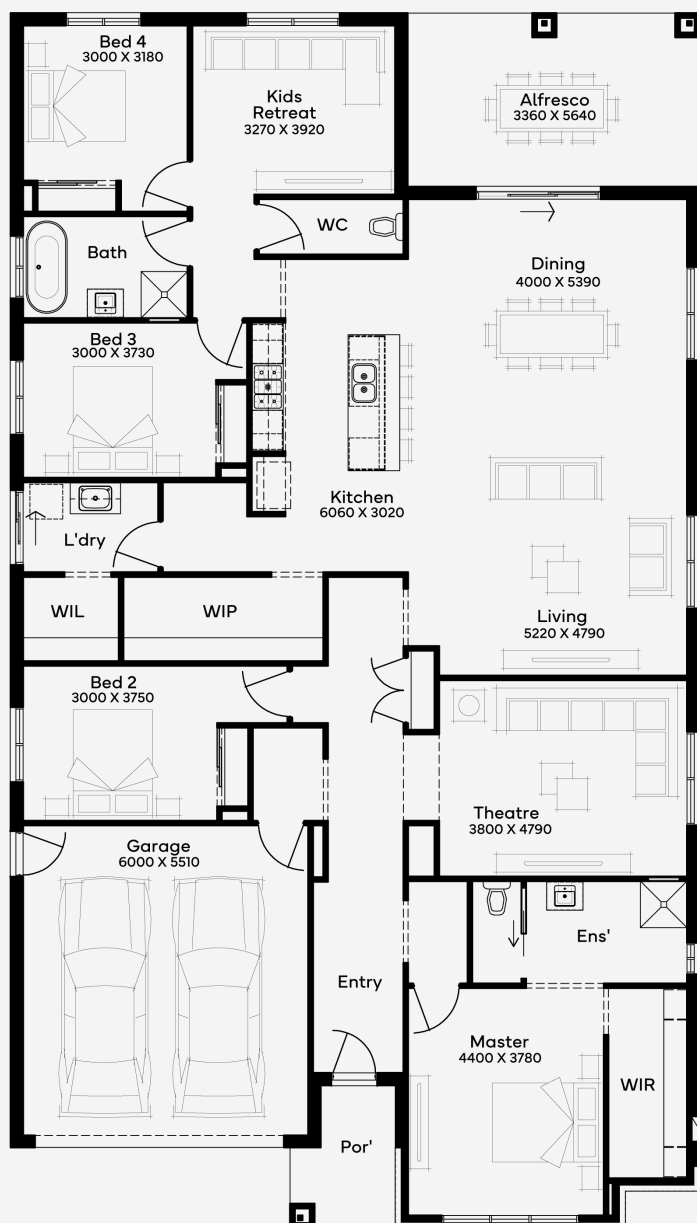
ELITE

House Area

303.45 m²

Min Lot Size (WxL)

16m x 32m



16M+ LOT WIDTH

SINGLE STOREY