

# Pollock 23

\$326,400

4 2 2

ELITE

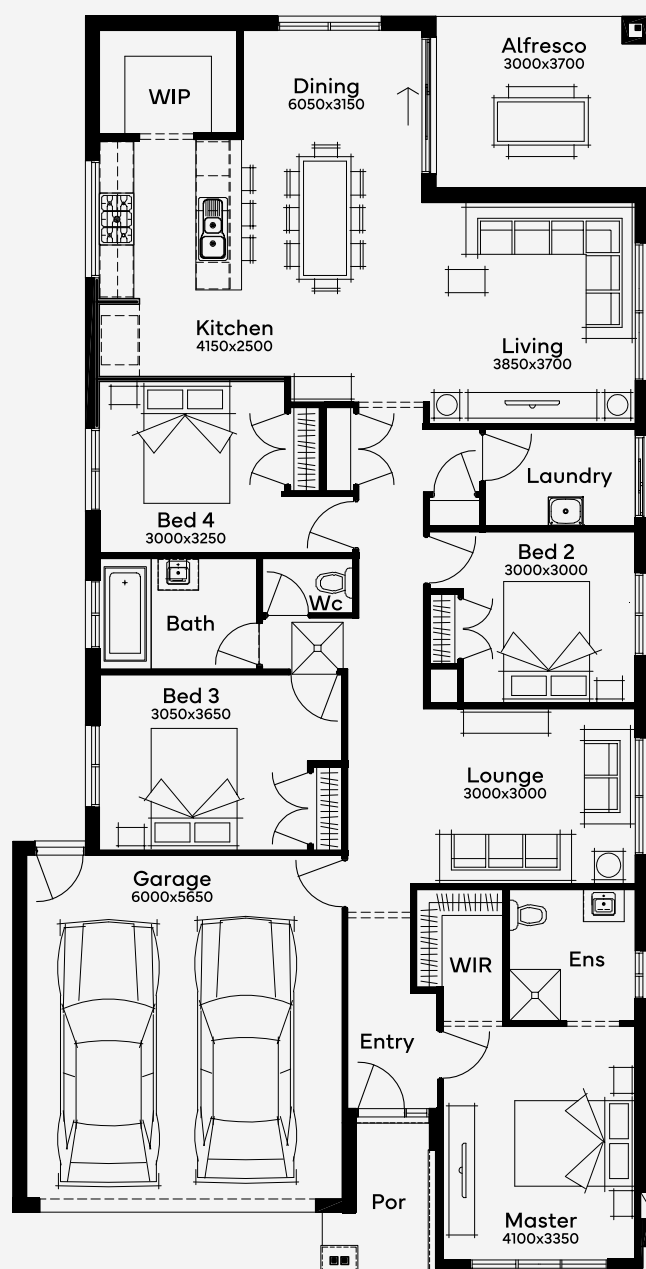
The Pollock 23 house design, spanning 219m<sup>2</sup>, is a testament to modern living with 4 bedrooms and 2 bathrooms, crafted for those who love to entertain. This single-storey home's heart is its light-filled kitchen and dining area, leading to an expansive living space and alfresco, perfect for gatherings. The master bedroom, a luxurious retreat, features a walk-in robe and ensuite, while the three additional bedrooms, each with built-in robes, share a family bathroom. The bright, opulent kitchen, complete with a walk-in pantry, anchors the sweeping open-plan layout, making the Pollock a beacon of form and function for modern families.

House Area

219.53 m<sup>2</sup>

Min Lot Size (WxL)

12m x 0m



Please note: Some floorplan option combinations may not be possible together - please speak to a New Home Specialist.

Base price shown as of 20 May 2024 and is subject to change.

**SIMONDS**  
How Australia Homes

12M+ LOT WIDTH

SINGLE STOREY