

# Perry 17C

TOWNHOMES

4 3 2

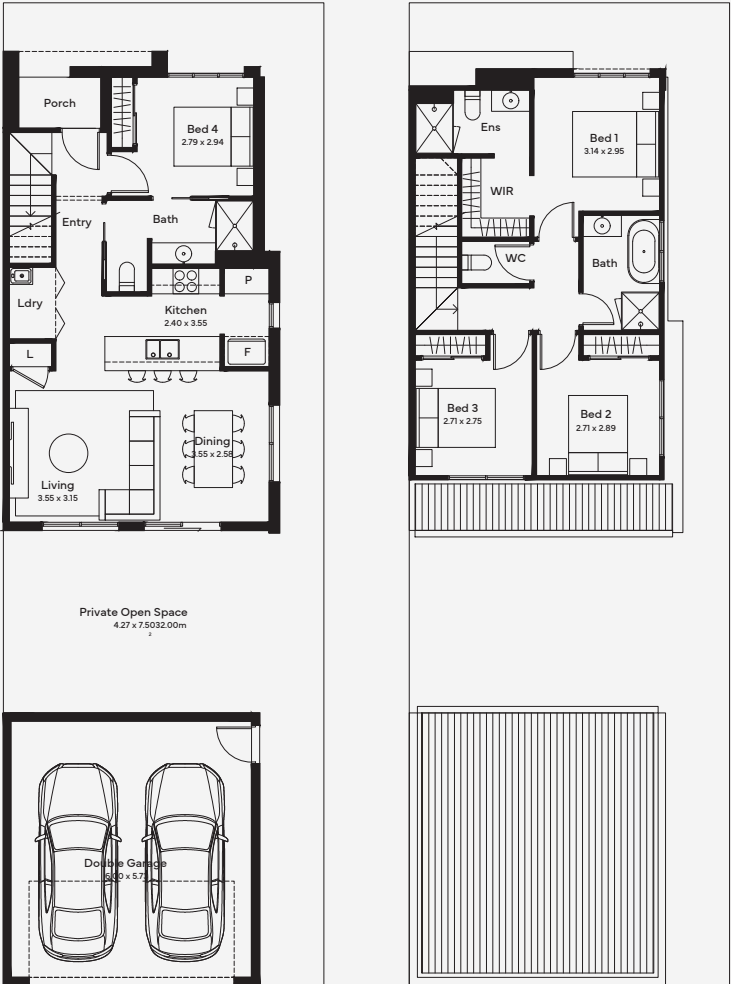
House Area

164.747 m<sup>2</sup>

Designed across two levels, the Perry 17 offers a thoughtfully crafted layout with modern finishes tailored for today's lifestyle. Showcasing 4 bedrooms, 3 bathrooms, a private courtyard and a rear-loaded double garage, this modern, double-storey townhome delivers both comfort and convenience at a compelling price point. The ground floor features a second master bedroom with an ensuite and built-in robe, before flowing through to the open plan kitchen, dining and living that overlooks a private outdoor space aptly situated for alfresco dining and entertaining. A Euro-style laundry and built-in linen cupboard complete this level. Upstairs, two well-proportioned secondary bedrooms are serviced by a family bathroom with a bathtub and separate WC, while the main master suite overlooks the streetscape and features its own walk-in robe and ensuite. Designed for efficient, easy living, the

6M+ LOT WIDTH

DOUBLE STOREY



Please note: Some floorplan option combinations may not be possible together. Please speak to a New Home Specialist.  
Base price shown as of 24 August 2025 and is subject to change.

