

Murraya 17

3 2 1

EMERGE

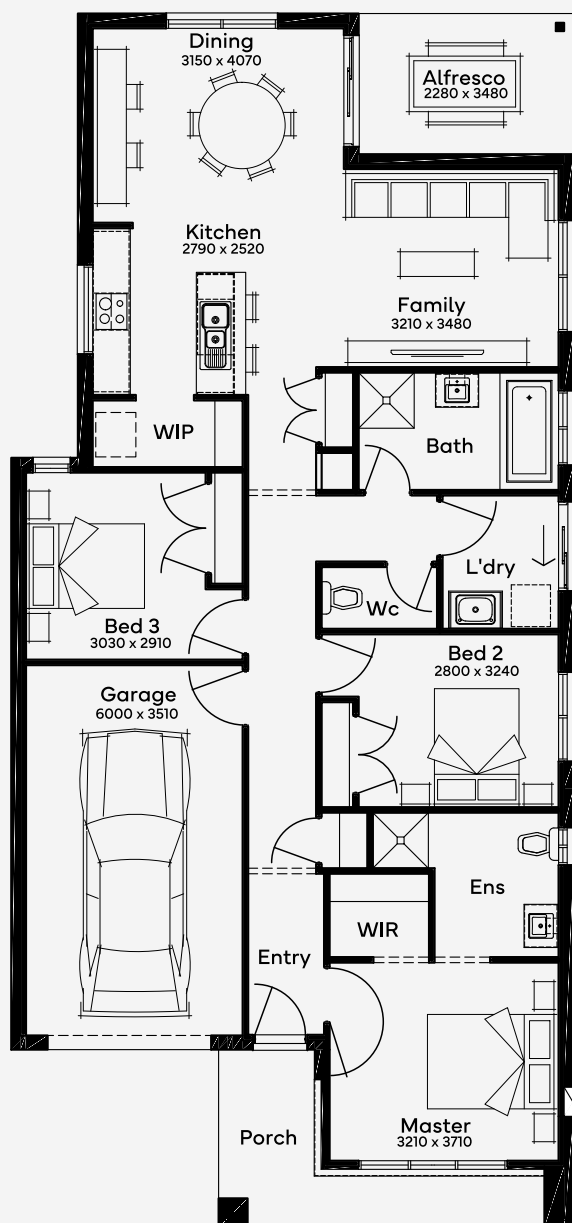
House Area

161.73 m²

Min Lot Size (WxL)

10.5m x 25m

The Murraya 17, a 3-bedroom, 2-bathroom home complete with a 1-car garage, is designed for a 10.5m+ block, offering a blend of comfort and modernity in a single-storey. Its heart is the rear-spanning living space, featuring a state-of-the-art kitchen and dining area that opens to an alfresco, perfect for indoor-outdoor entertainment. A cosy nook provides a quiet retreat, with the option to add a home office. The front is dedicated to the bedrooms, with a luxurious master suite ensuring a private haven. The thoughtful floor plan also includes two additional bedrooms, a bathroom, and a laundry, epitomising efficient use of space.



Please note: Some floorplan option combinations may not be possible together. Please speak to a New Home Specialist.
Base price shown as of 18 September 2025 and is subject to change.

SIMONDS
How Australia Homes

10.5M+ LOT WIDTH

SINGLE STOREY