

Mundi 24



EMERGE

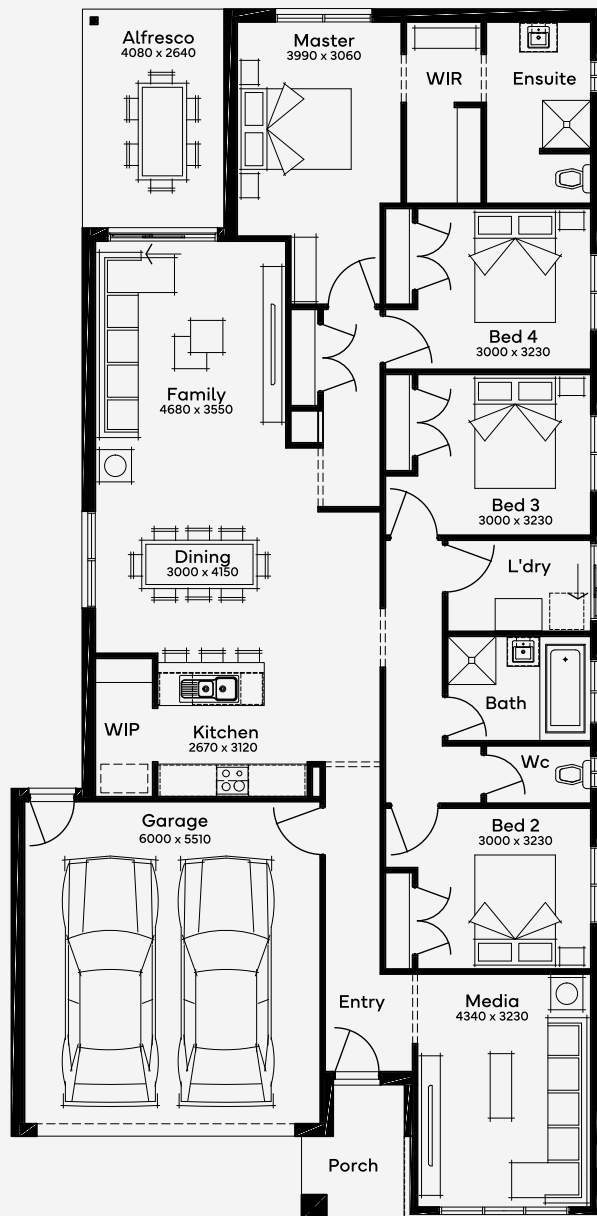
House Area

221.13 m²

Min Lot Size (WxL)

12.5m x 30m

The Mundi 24, a 4-bedroom, 2-bathroom single-storey home with 2 living spaces, suits a 12.5m+ block and is perfect for lovers of urban living. It features a modern kitchen with a walk-in pantry and alfresco area for seamless indoor-outdoor living. The media room and spacious bedrooms with built-in wardrobes add to the home's luxury, while the master suite provides a private adult retreat with a modern ensuite and grand walk-in robe.



12.5M+ LOT WIDTH

SINGLE STOREY

Please note: Some floorplan option combinations may not be possible together. Please speak to a New Home Specialist.
Base price shown as of 23 November 2024 and is subject to change.

