

Montebello 27



ELEVATE

House Area

251.03 m²

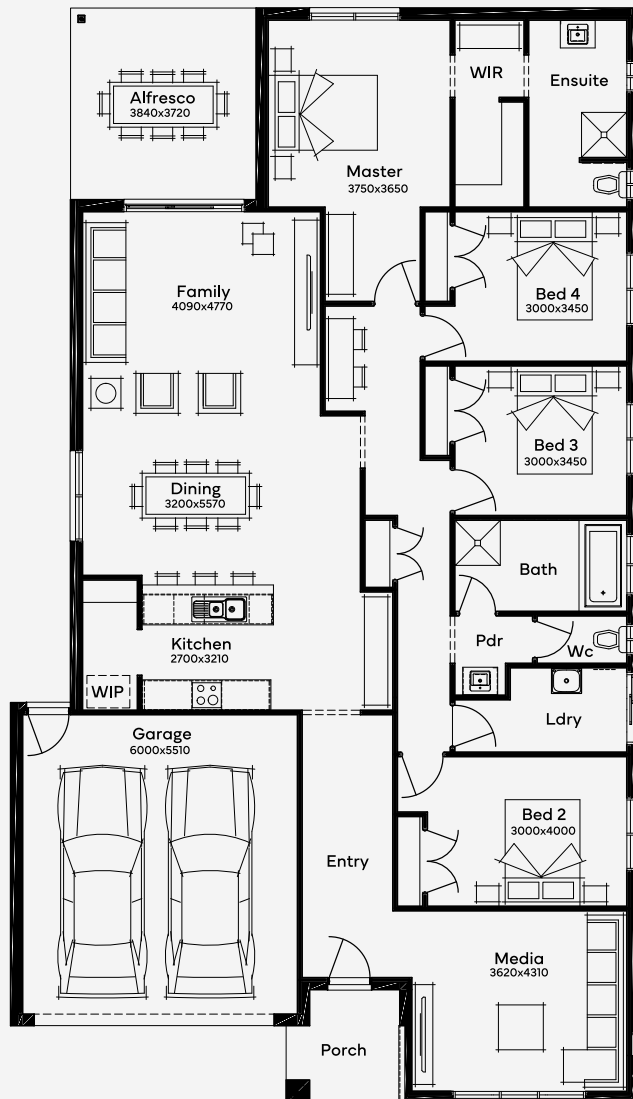
Min Lot Size (WxL)

14m x 30m

Ideal for 14m+ blocks, the Montebello 27 unfolds a spacious 4-bedroom, 2-bathroom layout, complete with a 2-car garage. This single-storey house design emphasises stylish yet simple living, featuring open-plan living areas and a gourmet kitchen with a walk-in pantry. The expansive alfresco floods the family zones with daylight. The home theatre caters to movie enthusiasts and gamers alike, while the luxurious master suite, complete with an ensuite and walk-in wardrobe, provides a tranquil retreat. The additional three bedrooms are designed for comfort and relaxation, perfect for families with older children.

14M+ LOT WIDTH

SINGLE STOREY



Please note: Some floorplan option combinations may not be possible together - please speak to a New Home Specialist.
Base price shown as of 17 September 2024 and is subject to change.

