

Monohan 26

5 2 2

EMERGE

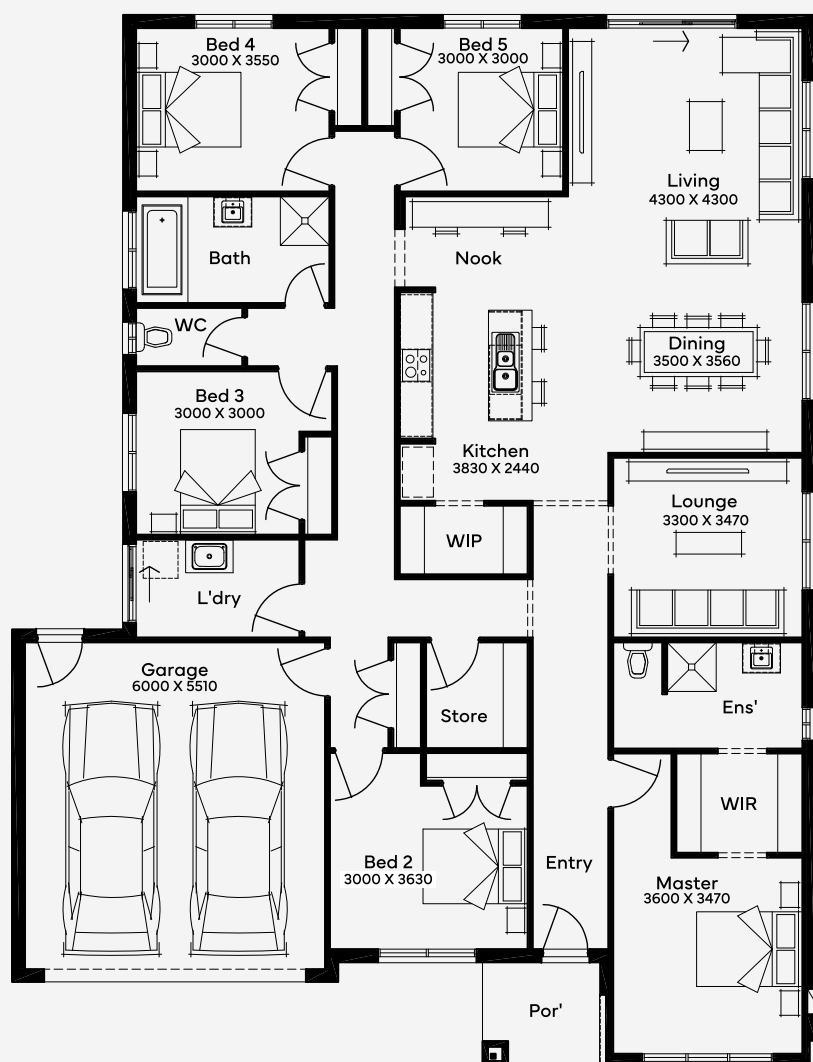
House Area

247.38 m²

Min Lot Size (WxL)

16m x 28m

Explore the Monohan 26, this stunning single-storey design is perfect for families seeking space, comfort, and modern living, all on a generous 16m+ block. Boasting 5 spacious bedrooms, 2 stylish bathrooms, and a double garage, this home offers ample room for every family member to enjoy. The open-plan living and dining areas are complemented by a contemporary kitchen with a walk-in pantry, perfect for those who love to entertain. Whether you're relaxing in the large master suite with its walk-in robe and private ensuite or enjoying the cosy nook with loved ones, this home truly combines functionality with elegance. Step into the perfect blend of style and practicality?your future awaits!



Please note: Some floorplan option combinations may not be possible together. Please speak to a New Home Specialist.
Base price shown as of 16 July 2025 and is subject to change.

SIMONDS
How Australia Homes

16M+ LOT WIDTH

SINGLE STOREY