

# Marsden 39

 4
  3
  2

Big on Space, Small on Footprint The Marsden proves you don't need a wide block to enjoy generous family living. Suited to lots from just 12.5m wide, this smart double-storey design offers four walk-in-robbed bedrooms and an upstairs lounge for added flexibility. Downstairs, a light-filled open-plan living zone brings everyone together - perfect for busy mornings, relaxed evenings, and everything in between.

## INSPIRATIONS

House Area

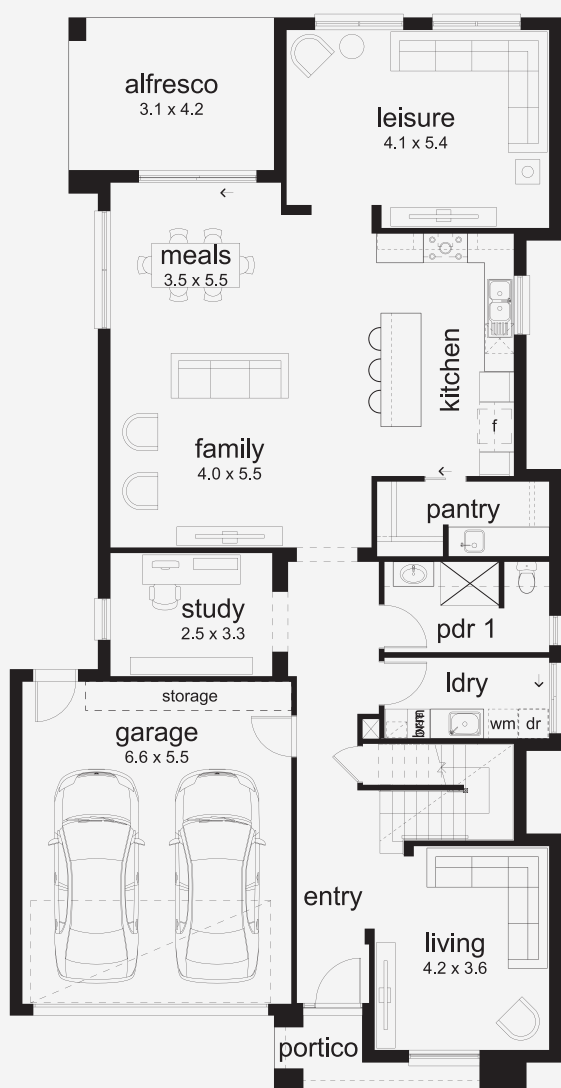
**364.8 m<sup>2</sup>**

Min Lot Size (WxL)

**12.5m x 30m**

12.5M+ LOT WIDTH

DOUBLE STOREY



Please note: Some floorplan option combinations may not be possible together. Please speak to a New Home Specialist.  
Base price shown as of 29 August 2025 and is subject to change.

**SIMONDS**  
How Australia Homes