

Marsden 31

 4
  2
  2

Clever Living, Compact Footprint The Marsden is a smart double-storey home that maximises space without needing a wide block. Designed for 12.5m lots, it features four bedrooms with walk-in robes, an upstairs lounge for added versatility, and open-plan living downstairs that flows with ease. It's a home that feels spacious, stylish and perfectly suited to modern family life.

INSPIRATIONS

House Area

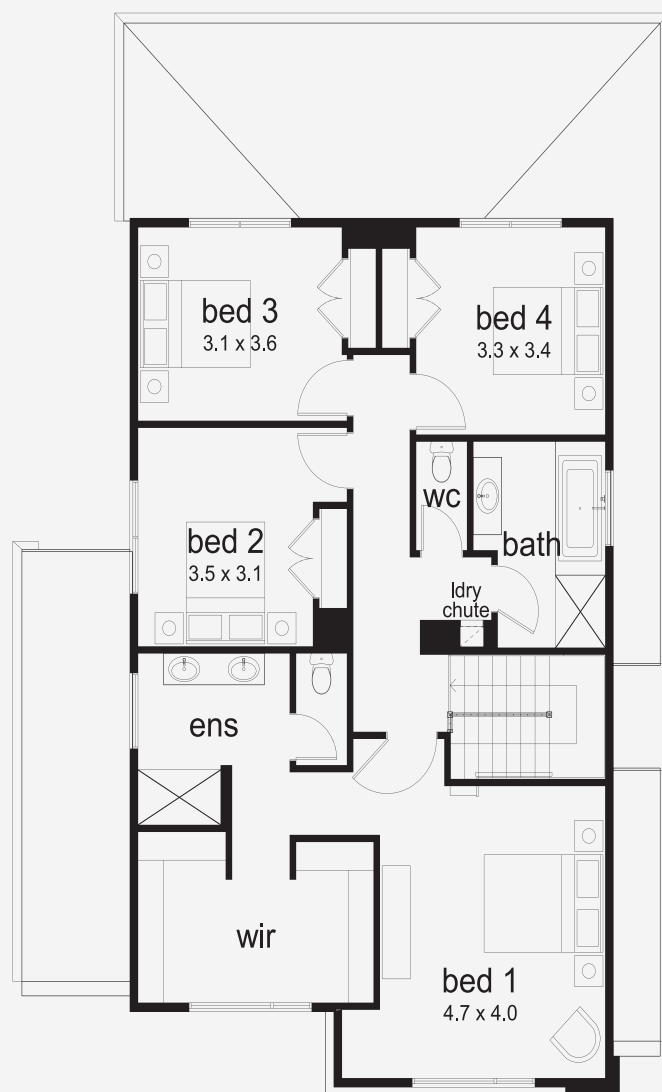
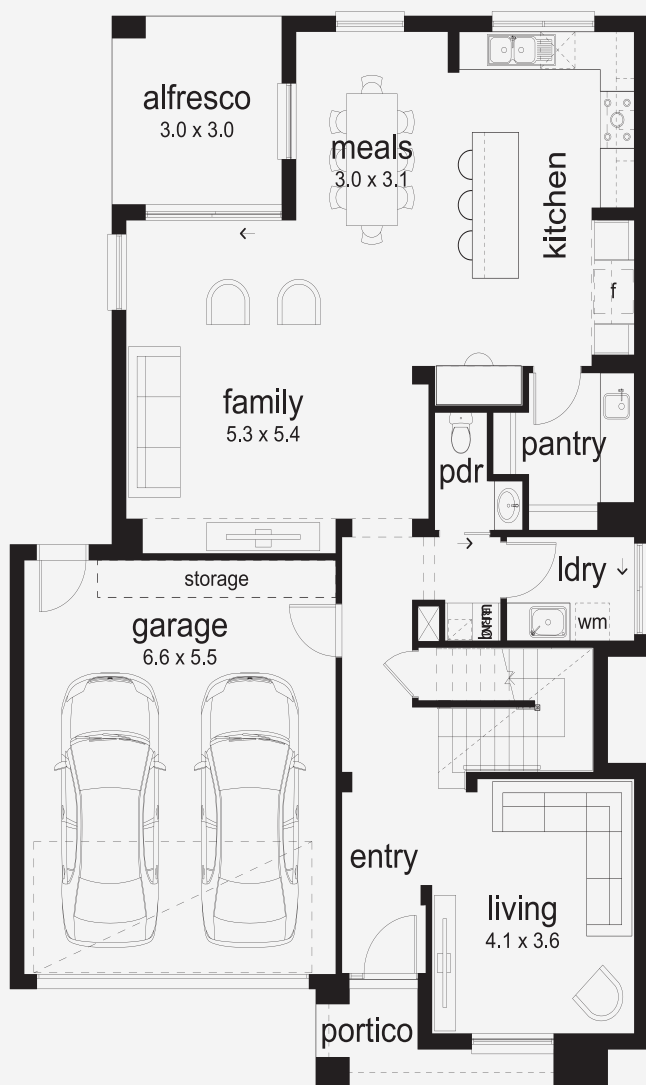
279.05 m²

Min Lot Size (WxL)

12.5m x 25m

12.5M+ LOT WIDTH

DOUBLE STOREY



Please note: Some floorplan option combinations may not be possible together. Please speak to a New Home Specialist.
Base price shown as of 08 January 2026 and is subject to change.

SIMONDS
How Australia Homes