

Maher 23

 4
  2
  2

Discover Maher 23 the epitome of modern living with this stunning single-story home design! Perfectly crafted for families, this home boasts 4 spacious bedrooms, 2 stylish bathrooms, and a double car garage, all designed with comfort and functionality in mind. Situated on a 12.5m+ block, it offers plenty of room to move and grow, making it an ideal sanctuary for you and your loved ones. From the moment you step inside, you'll be captivated by the open-plan layout that seamlessly connects the kitchen, dining, and family areas, perfect for entertaining or relaxing with the family. A dedicated study and living room add extra space for work or leisure, while the luxurious master suite, complete with a walk-in robe and ensuite, offers a private retreat.

EMERGE

House Area

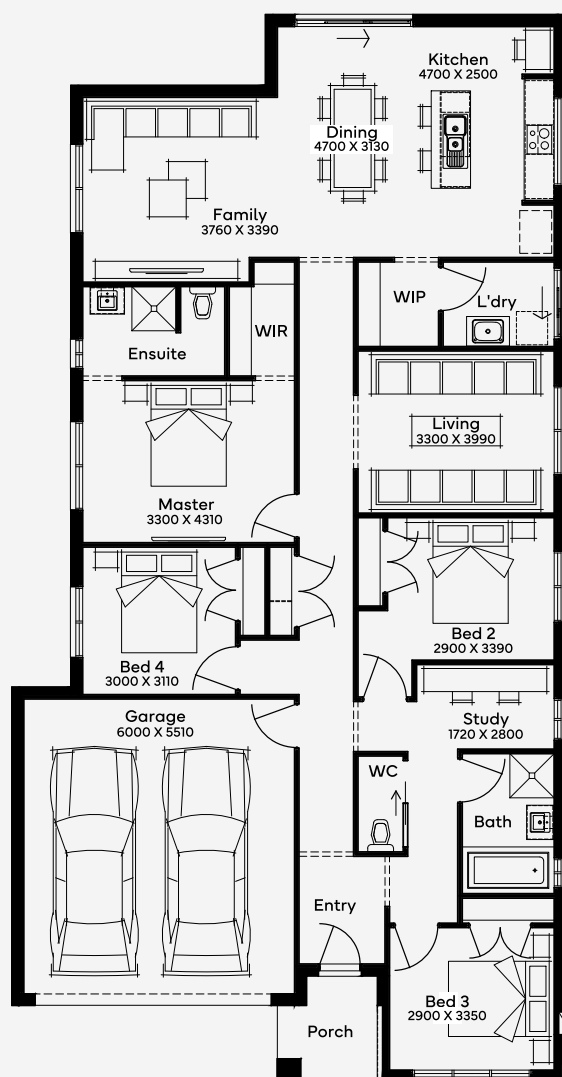
221.04 m²

Min Lot Size (WxL)

12.5m x 30m

12.5M+ LOT WIDTH

SINGLE STOREY



Please note: Some floorplan option combinations may not be possible together. Please speak to a New Home Specialist.
Base price shown as of 14 January 2026 and is subject to change.

SIMONDS
How Australia Homes