

Luxford 34

 4
  2
  2

The Luxford 34 single-storey home design, crafted for 16m+ blocks, features 4 spacious bedrooms, 2 modern bathrooms, and a convenient 2 car garage. The heart of the home is the open plan kitchen, dining, and living areas, perfect for entertaining and family gatherings. The master suite is a true retreat with a walk-in robe and ensuite, while the secondary bedrooms are well-positioned for privacy. Additional highlights include a versatile rumpus room, a separate multipurpose room, and an inviting alfresco area for outdoor living. The layout is designed for comfort, functionality, and modern living.

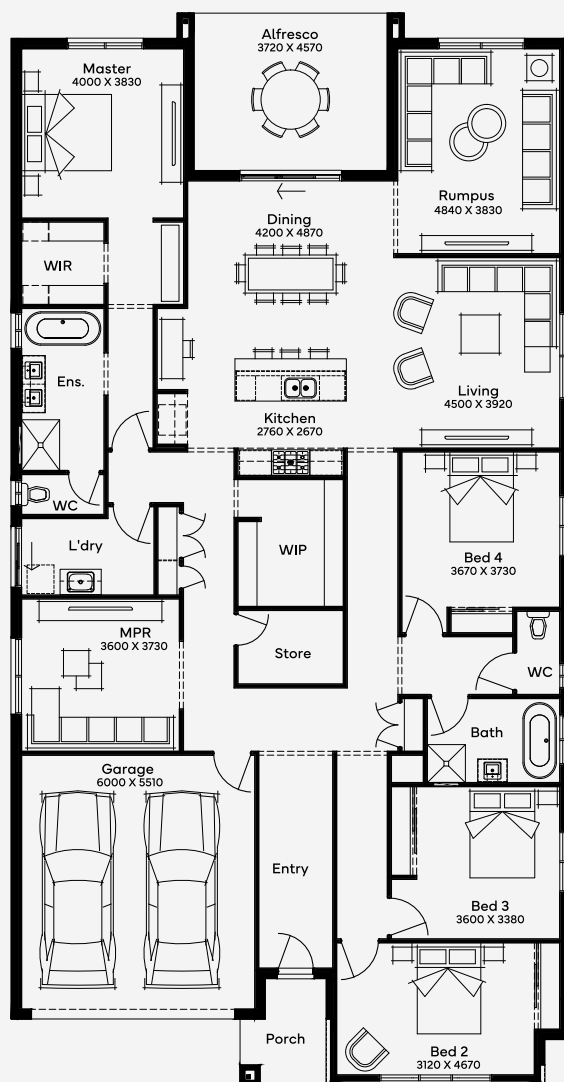
ELITE

House Area

320.06 m²

Min Lot Size (WxL)

16m x 33m



Please note: Some floorplan option combinations may not be possible together. Please speak to a New Home Specialist.
Base price shown as of 17 December 2025 and is subject to change.

SIMONDS
How Australia Homes

16M+ LOT WIDTH

SINGLE STOREY