

Lenox 24

READY NOW



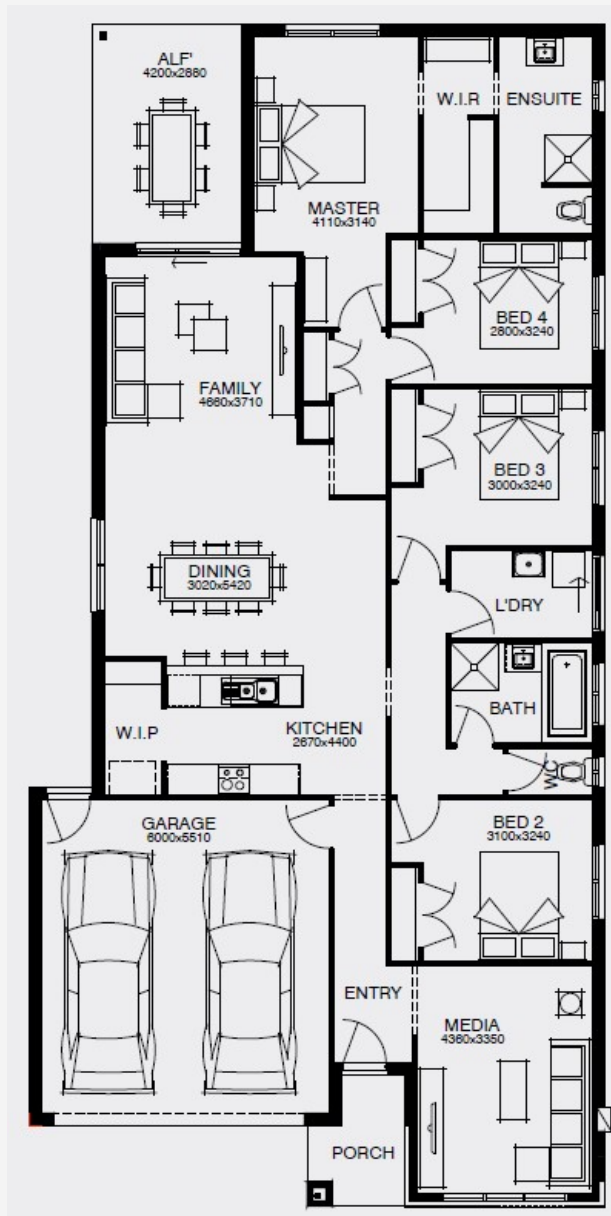
House Area

224.17 m²

The stunning 4-bedroom, 2-bathroom, single-storey Lenox 24 features luxurious touches and practical amenities. Designed for 12m+ blocks, the kitchen boasts a beautiful walk-in pantry and an open-plan living area, seamlessly connecting indoor and outdoor spaces. The alfresco area is perfect for entertaining friends and family. With 2 spacious lounges, including a media room, there are plenty of options to unwind and relax. The generously sized bedrooms come with built-in closets for optimal space usage. The glamorous master suite, complete with a modern ensuite and a grand walk-in robe, provides a serene retreat for adults to relax at the end of the day.

12.5M+ LOT WIDTH

SINGLE STOREY



Please note: Some floorplan option combinations may not be possible together. Please speak to a New Home Specialist.
Base price shown as of 27 September 2024 and is subject to change.

