

# Kiama 17

3 2 2

EMERGE

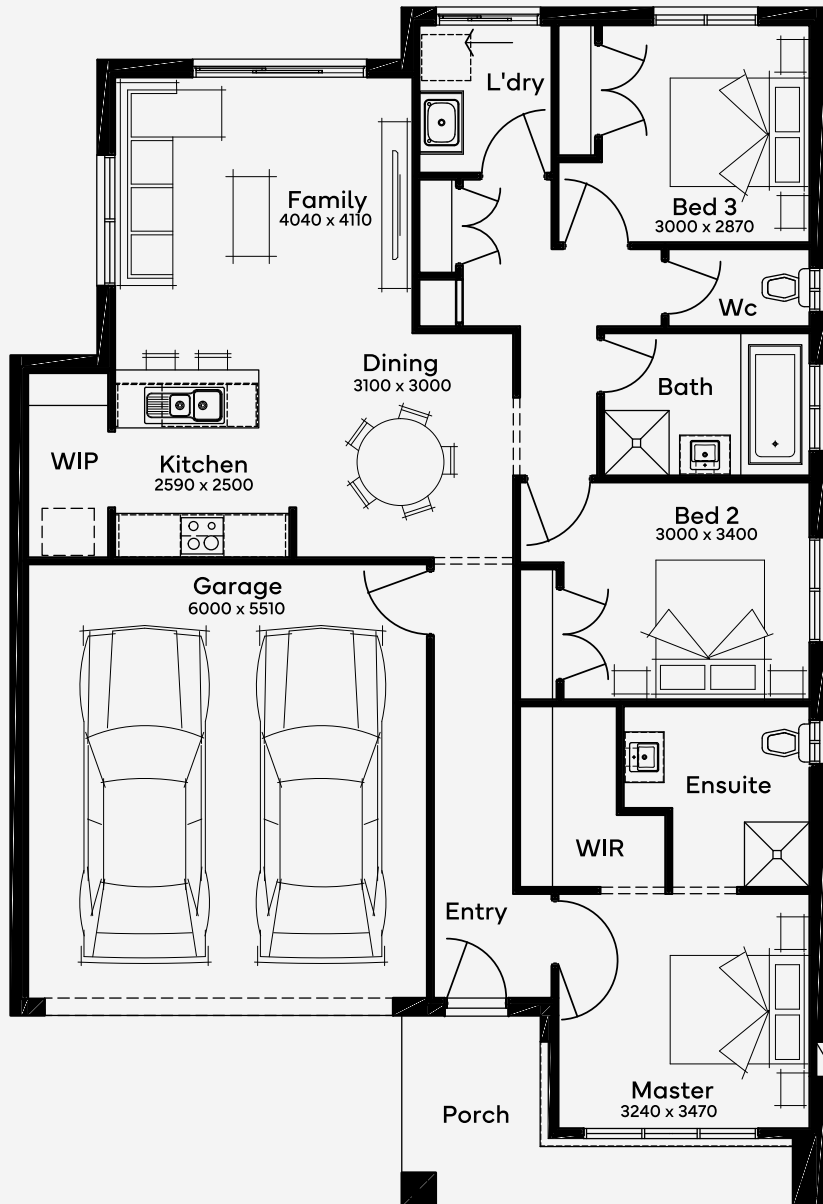
House Area

163.47 m<sup>2</sup>

Min Lot Size (WxL)

12.5m x 21m

The Kiama 17, with its 3 bedrooms and 2 bathrooms, features a 2-car garage and is designed for a 12.5m+ block, embodying the essence of modern living. The heart of this single-storey home is its cosy, open-plan living space, seamlessly connecting the kitchen to the dining and lounge areas perfect for family interaction and relaxation. Flexibility is key; options include adding a butlers pantry or reconfiguring the master ensuite and living layout to suit your lifestyle. The floor plan offers well-proportioned bedrooms, ensuring personal space and tranquility, making it an ideal home for those who value family time and privacy.



12.5M+ LOT WIDTH

SINGLE STOREY

Please note: Some floorplan option combinations may not be possible together. Please speak to a New Home Specialist.  
Base price shown as of 19 June 2026 and is subject to change.

