

Jervis 25

 4
  2
  2

The Jervis 25, suitable for 14m+ blocks, offers 4 bedrooms, 2 bathrooms, and a 2-car garage. This single-storey house design combines sleek aesthetics with practical family living. The floor plan highlights open, airy spaces for family gatherings, alongside private areas for relaxation. Modern amenities and thoughtful design elements make the Jervis 25 an ideal choice for families seeking a home that strikes a balance between style, comfort, and functionality.

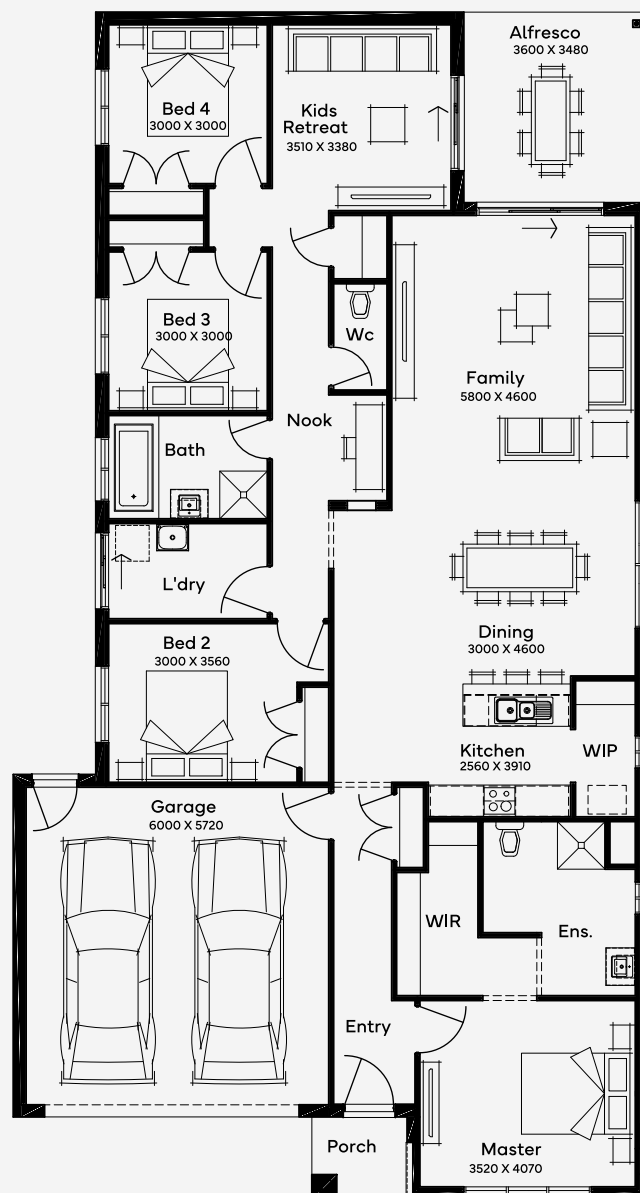
ELEVATE

House Area

237.65 m²

Min Lot Size (WxL)

14m x 30m



Please note: Some floorplan option combinations may not be possible together. Please speak to a New Home Specialist.
Base price shown as of 03 August 2025 and is subject to change.


SIMONDS
 How Australia Homes

14M+ LOT WIDTH

SINGLE STOREY