

Jansen 26

 4
  2
  2

Effortless Entertaining, Easy Living The Jansen is a home that welcomes you from the moment you step inside. At its heart is a well-connected open-plan living zone that flows seamlessly to the alfresco - ideal for entertaining family and friends. When it's time to unwind, the master suite at the front of the home offers a private escape, while the secondary bedrooms are thoughtfully tucked away in their own wing. Designed with balance and lifestyle in mind, the Jansen truly has it all.

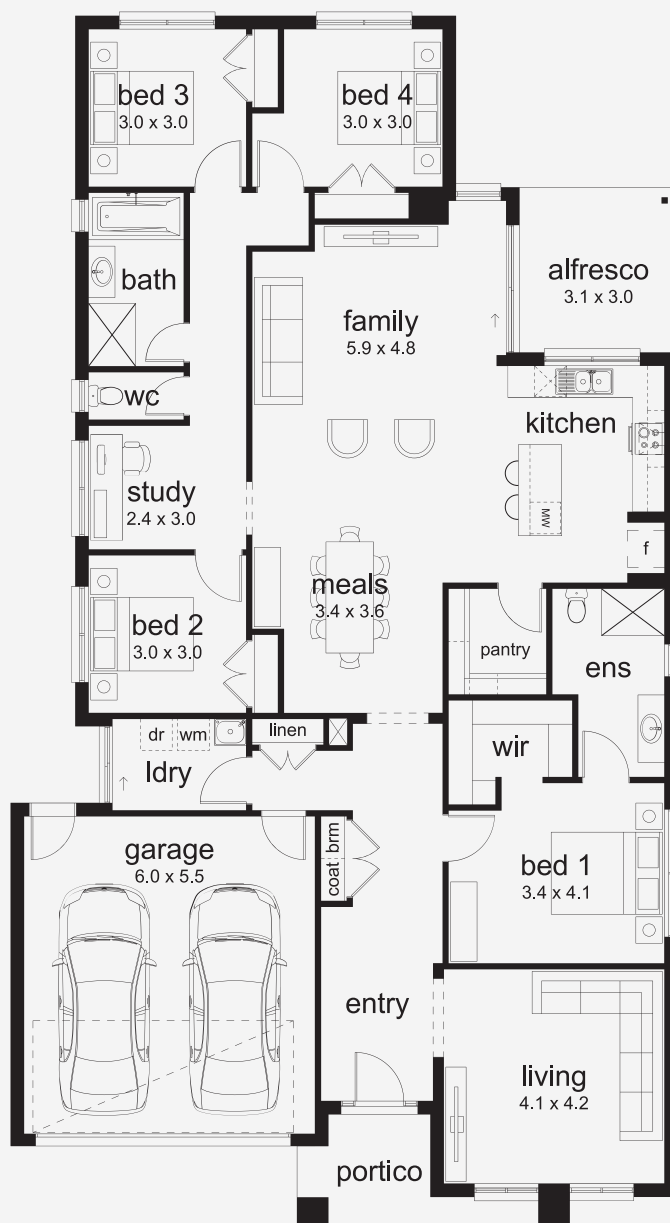
ASPIRATIONS

House Area

246.63 m²

Min Lot Size (WxL)

14m x 30m



Please note: Some floorplan option combinations may not be possible together. Please speak to a New Home Specialist.
Base price shown as of 29 August 2025 and is subject to change.

SIMONDS
How Australia Homes