

Heathcote 29

 4
  2
  2

INSPIRATIONS

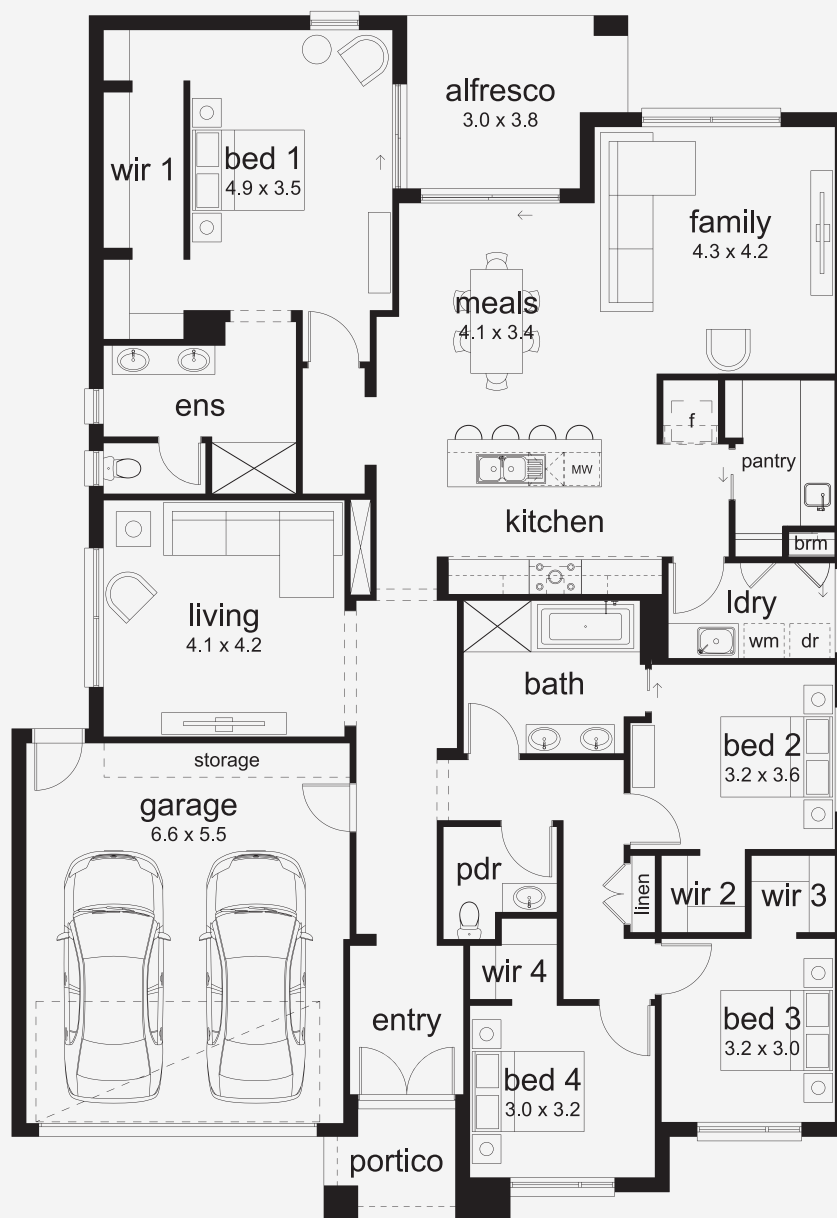
House Area

266.51 m²

Min Lot Size (WxL)

16m x 28m

Everyday Comfort, Thoughtfully Designed The Heathcote is all about simple pleasures done well. At the rear of the home, the master suite offers a peaceful retreat with leafy alfresco views, while each of the four bedrooms includes its own walk-in robe for added convenience. A two-way bathroom near the secondary bedrooms makes family living easy, and selected floorplans offer a second living area and dedicated study - perfect for growing families or those working from home. With clever design at every turn, the Heathcote makes coming home feel just right.



Please note: Some floorplan option combinations may not be possible together. Please speak to a New Home Specialist.
Base price shown as of 29 August 2025 and is subject to change.

SIMONDS
How Australia Homes

16M+ LOT WIDTH

SINGLE STOREY