

Gresswell 41

\$546,100

6 3 2

ELITE

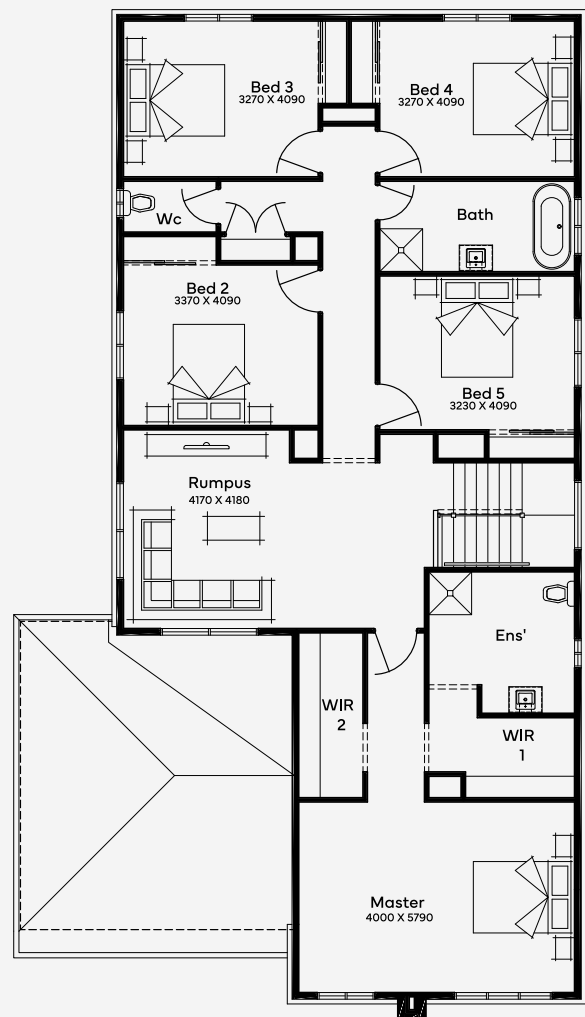
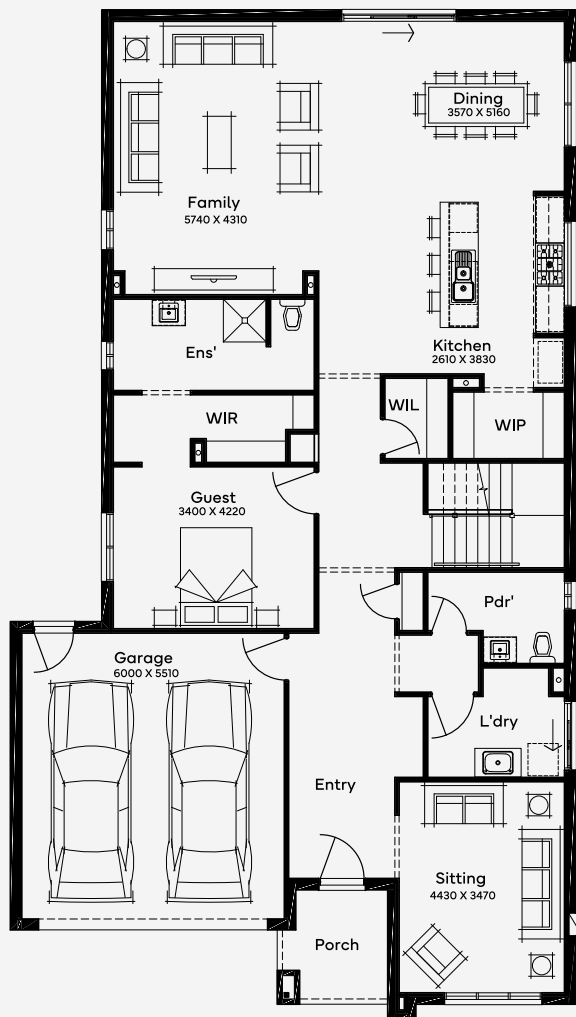
Designed for 14m+ blocks, the Gresswell 41 includes 6 bedrooms, 3 bathrooms, and a 2-car garage over two floors. The ground floor boasts two living areas ideal for entertaining, an open-plan design, and a kitchen with ample storage and walk-in pantry. Upstairs, the luxurious master bedroom features dual walk-in robes and an ensuite. Four additional bedrooms with built-in cupboards surround a family bathroom, while the rumpus room can serve as a home theatre - the perfect floor plan for families of all stages.

House Area

385.23 m²

Min Lot Size (WxL)

14m x 30m



Please note: Some floorplan option combinations may not be possible together - please speak to a New Home Specialist.

Base price shown as of 20 May 2024 and is subject to change.

SIMONDS
How Australia Homes

14M+ LOT WIDTH

DOUBLE STOREY