

# Greeves 31

ELEVATE

House Area

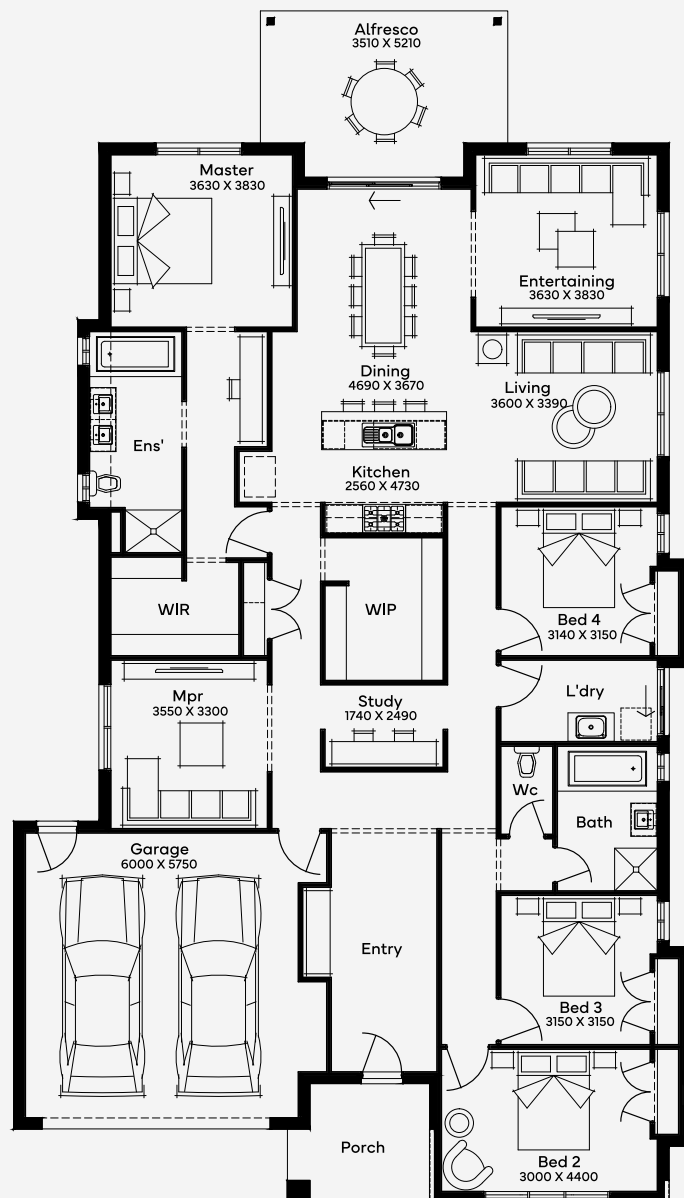
292.29 m<sup>2</sup>



An entertainer's paradise awaits in the sprawling single-storey Greeves 31 house design. As soon as you enter, expect style, space, and playful design to take centre stage. Showcasing 4 spacious bedrooms and 2 bathrooms, including a master bedroom and ensuite that feels like a getaway, this home has room for everyone. An inviting entryway makes a statement from the get-go, before leading your past the study and walk-in pantry to the beautiful the open-plan living, dining, and kitchen area. With 3 living spaces plus a large entertainer's alfresco, households will be set to host regardless of the season or occasion. Designed to make the most of 16m+ wide blocks with a 2-car garage, the Greeves 31 floorplan blends modern design with everyday comfort, making it the perfect place to grow and enjoy your next chapter.

16M+ LOT WIDTH

SINGLE STOREY



Please note: Some floorplan option combinations may not be possible together. Please speak to a New Home Specialist.  
Base price shown as of 21 August 2025 and is subject to change.



**SIMONDS**  
How Australia Homes