

# Grampian 22



Designed for a 12.5m+ block, Grampian 22 is a single-storey 4-bedroom, 2-bathroom home featuring a 2-car garage tailored to meet the evolving needs of young families. At its core is a large open-plan kitchen with a walk-in pantry, leading to an enclosed alfresco, creating the perfect setting for family bonding and guest entertainment. The living space is the focal point of this home, designed to foster connection and comfort. The spacious master bedroom, complete with an ensuite and walk-in wardrobe, offers a private retreat. The three additional bedrooms are strategically placed in the home's centre, ensuring a balanced distribution of space and privacy.

EMERGE

House Area

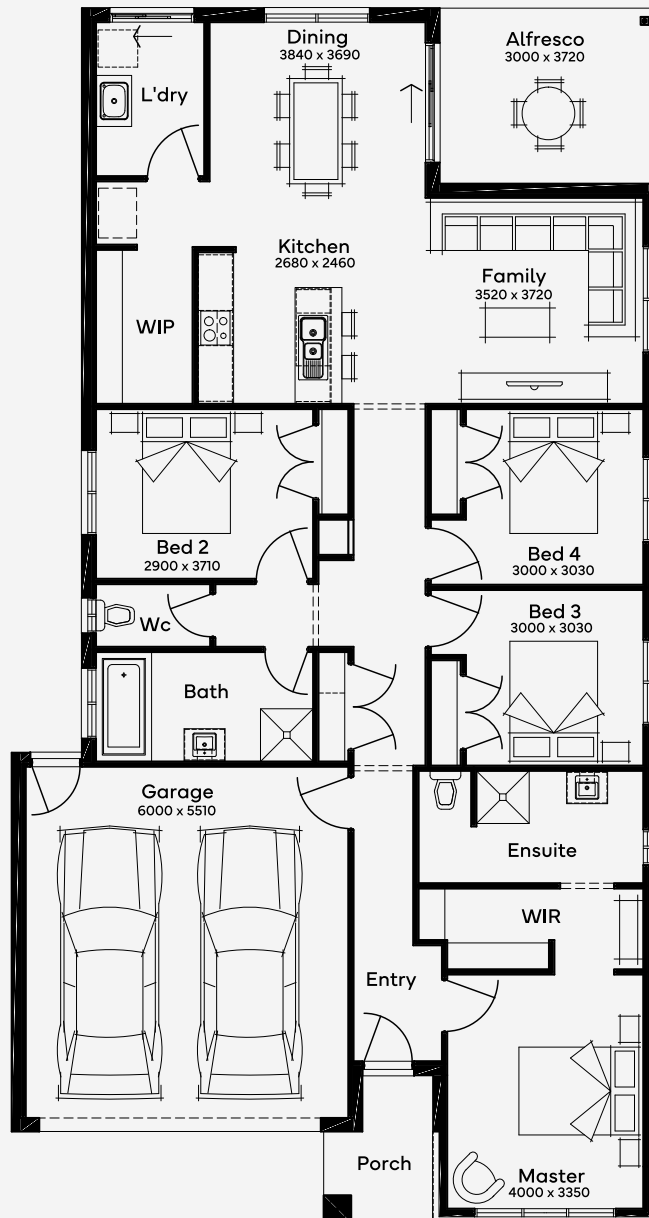
**205.29 m<sup>2</sup>**

Min Lot Size (WxL)

**12.5m x 28m**

12.5M+ LOT WIDTH

SINGLE STOREY



Please note: Some floorplan option combinations may not be possible together. Please speak to a New Home Specialist.  
Base price shown as of 19 October 2024 and is subject to change.

