

Grampian 19

 4
  2
  2

EMERGE

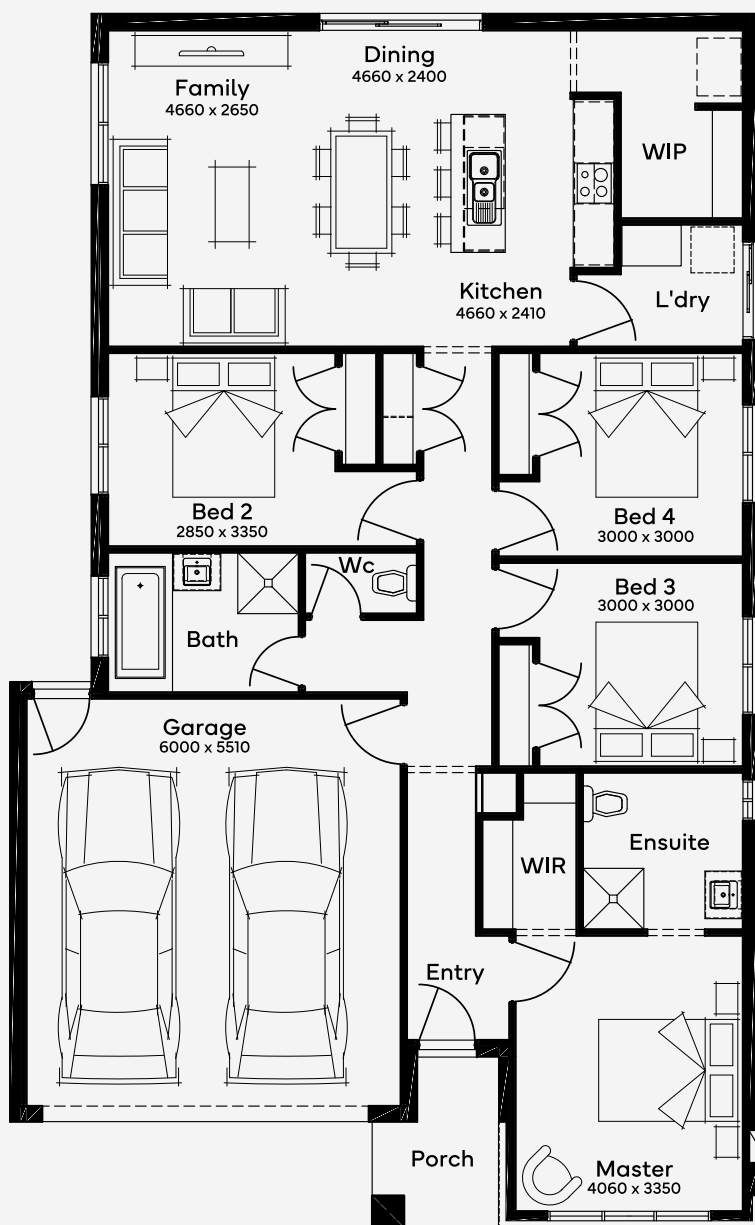
House Area

176.98 m²

Min Lot Size (WxL)

12.5m x 25m

The Grampian 19, designed for a 12.5m+ block, features 4 bedrooms and 2 bathrooms, complemented by a 2-car garage, and captures the essence of modern urban living. The front of the single-storey home houses a luxurious master suite, providing a private sanctuary. The heart of the home is the expansive living area at the rear, bathed in natural light, offering a versatile space for relaxation and entertainment. The contemporary kitchen, centrally located in the floor plan, is perfect for hosting or enjoying quiet moments. Grampian 19 is more than a house; it's a statement of individual style and metropolitan living.



Please note: Some floorplan option combinations may not be possible together. Please speak to a New Home Specialist.
Base price shown as of 26 July 2025 and is subject to change.

SIMONDS
How Australia Homes

12.5M+ LOT WIDTH

SINGLE STOREY