

Gramercy 19

READY NOW



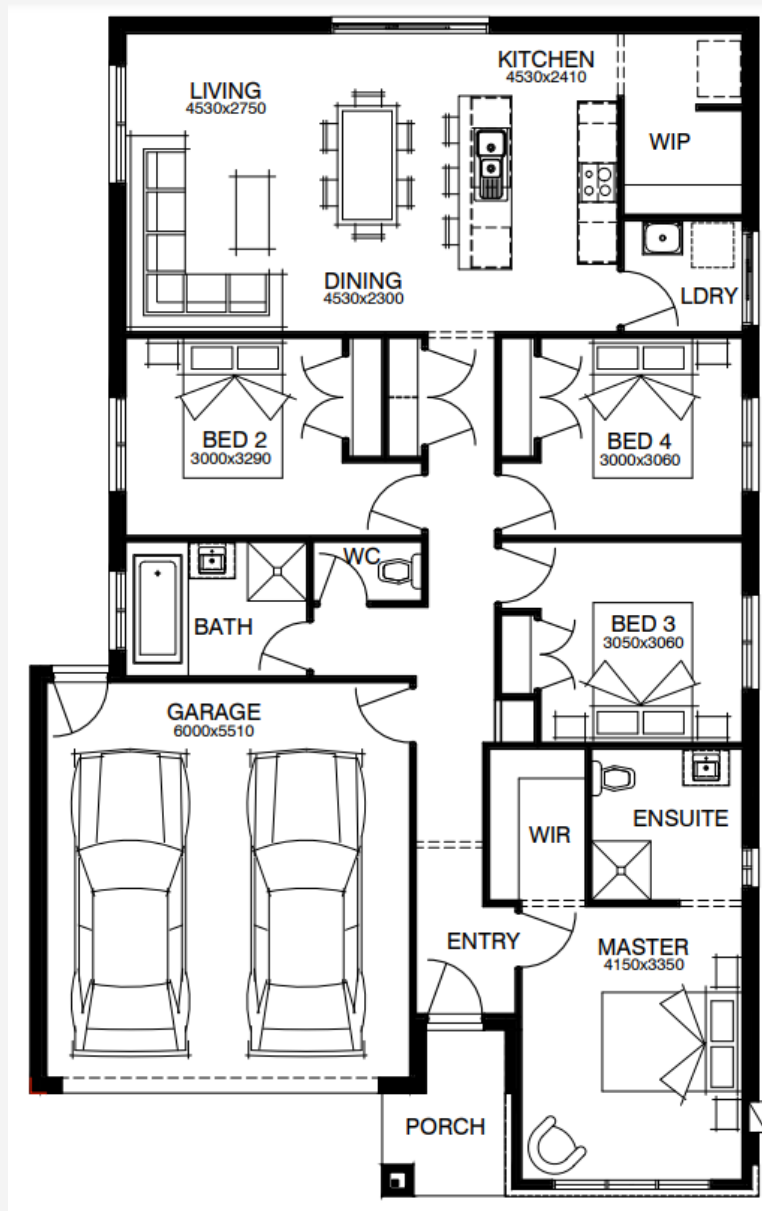
House Area

179.75 m²

Experience urban elegance with the captivating Gramercy 19, where a city inspired home meets modern comfort. At the front, a well equipped master suite serves as your personal retreat, while a further 3 secondary bedrooms and central bathroom provide ample space for everyone in the household. The expansive kitchen and living area, stretches across the back of the home, inviting bountiful natural light into a versatile space for both relaxation and entertaining. The contemporary kitchen, with a spacious walk-in pantry is perfect for hosting gatherings and keeping an eye on children. Designed for 12.5m+ blocks, the single-storey Gramercy 21 floor plan is your gateway to a stylish, metro-inspired lifestyle.

12.5M+ LOT WIDTH

SINGLE STOREY



Please note: Some floorplan option combinations may not be possible together. Please speak to a New Home Specialist.
Base price shown as of 22 December 2024 and is subject to change.

