

Ellis 21

TOWNHOMES

 4
  2.5
  2

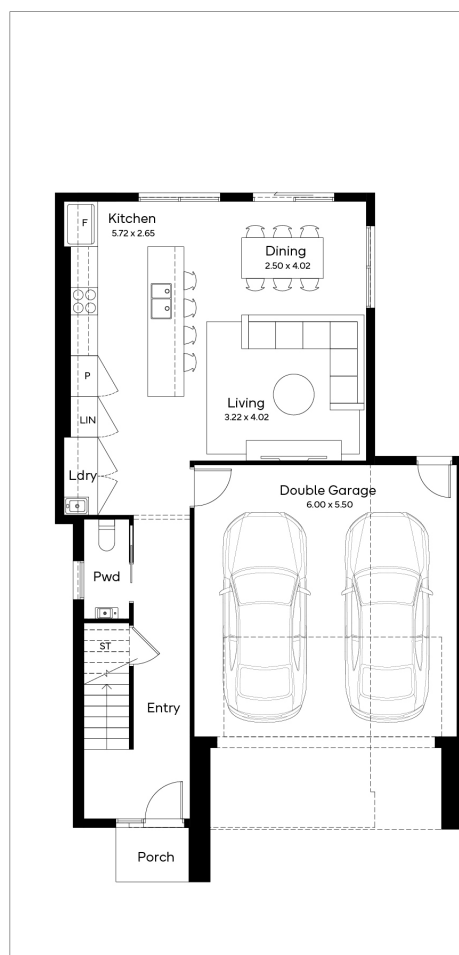
House Area

200.66 m²

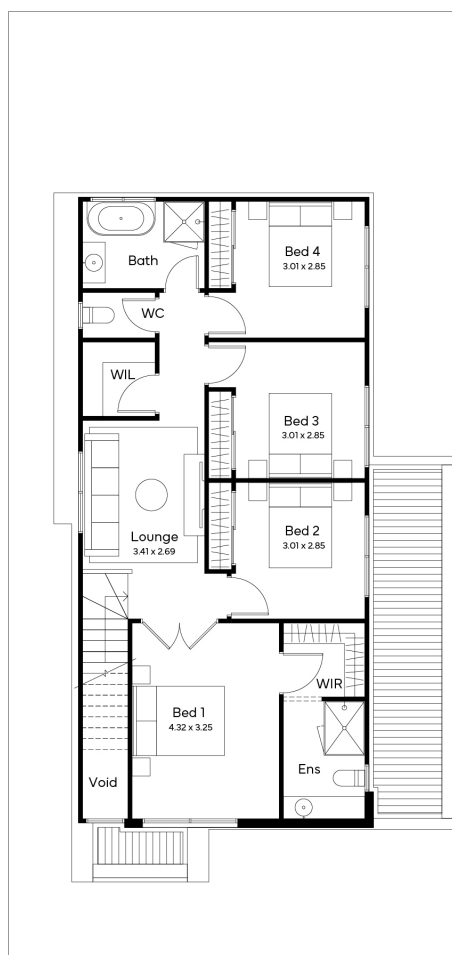
The Ellis is a thoughtfully designed double-storey townhome that blends contemporary style with everyday functionality. Featuring 4 bedrooms, 2.5 bathrooms, 2 living areas, and a front-loaded double garage, this intelligently planned layout is tailored for growing families or savvy investors seeking lasting value. Step inside through direct internal garage access and into the spacious open-plan kitchen, dining, and living zone, complemented by a convenient powder room on the ground floor. Upstairs, four generously sized bedrooms – including a well-appointed master suite with walk-in robe and private ensuite – provide ample space and comfort. Clever design touches such as under-stair storage, a Euro-style laundry, and walk-in linen add to the home's everyday ease and practicality. Available in 20, 21 and 22 square configurations, the Ellis offers flexibility for

11.5M+ LOT WIDTH

DOUBLE STOREY



Ground Floor



First Floor

Please note: Some floorplan option combinations may not be possible together. Please speak to a New Home Specialist.
Base price shown as of 14 September 2025 and is subject to change.

SIMONDS
How Australia Homes