

Danella 18

3 2 2

The Danella 18, ideal for a 14m+ block, is a 3-bedroom, 2-bathroom home featuring a 2-car garage and a unified living space that exudes modernity. This single-storey design cleverly integrates hidden pockets of privacy with a spacious living area that opens to the outdoors, ensuring a balance of light and functionality. The large outdoor connection illuminates the interior, creating a vibrant atmosphere perfect for family activities or entertaining guests. Danella 18 is not just a house; it's a thoughtfully designed sanctuary where every family moment becomes a cherished memory.

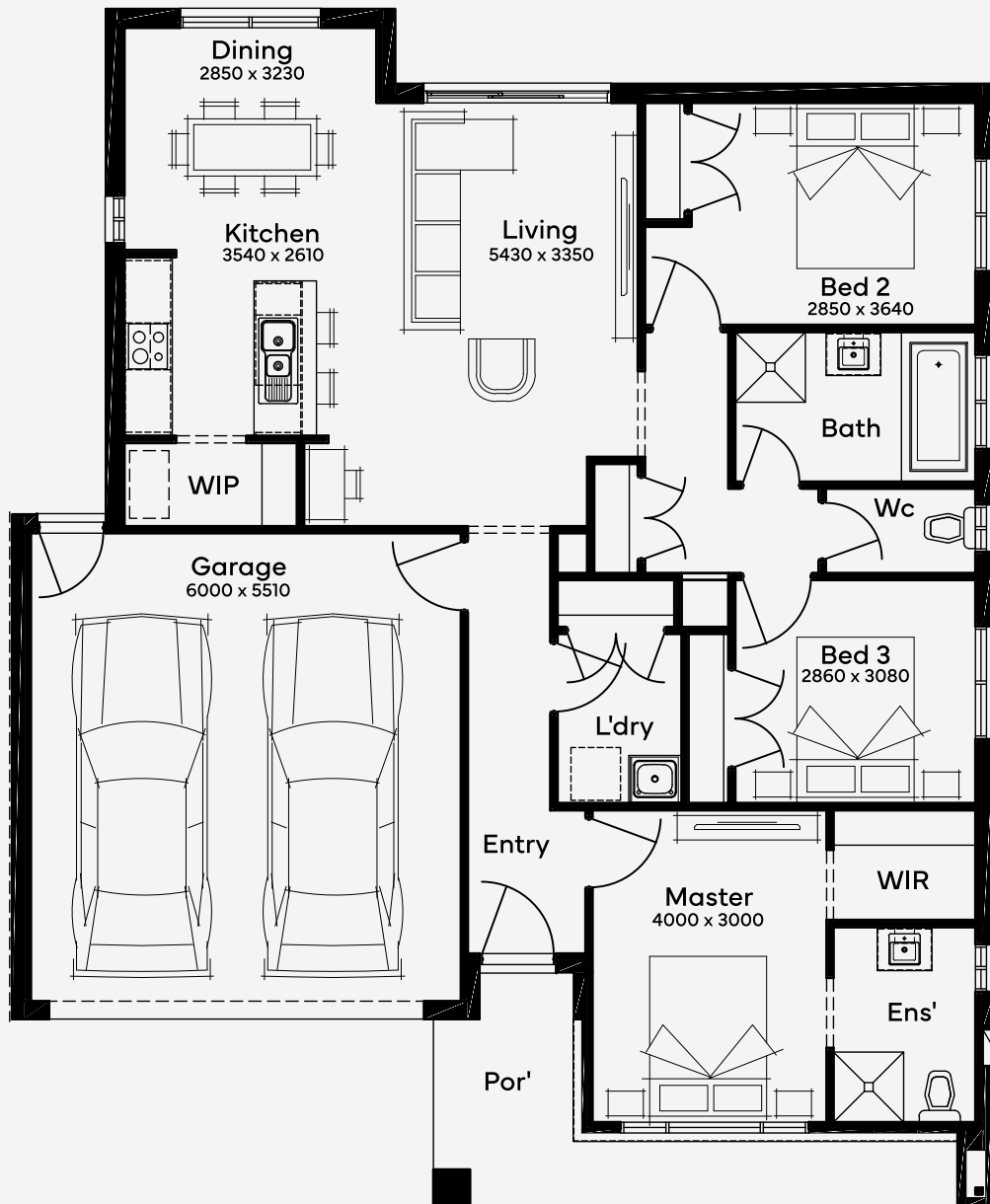
EMERGE

House Area

165.14 m²

Min Lot Size (WxL)

14m x 21m



14M+ LOT WIDTH

SINGLE STOREY