

# Cypress 26



The Cypress 26, designed for a 14m+ block, includes 4 bedrooms, 2 bathrooms, and a 2-car garage over a single-storey. The master bedroom, a tranquil adult retreat, features an ensuite and walk-in wardrobe. Generously sized bedrooms suit teens, while the gourmet kitchen with a walk-in pantry flows into the family and meals area. An additional lounge, perfect for a home theatre, adds to the entertainment appeal, making it the perfect all-around family home.

ELEVATE

House Area

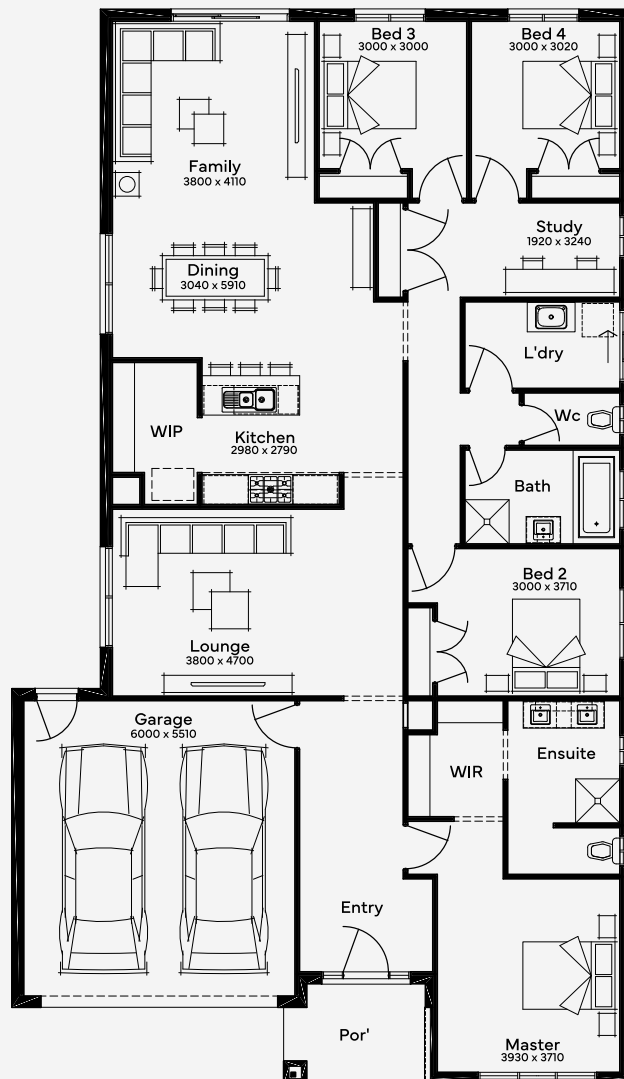
**241.36 m<sup>2</sup>**

Min Lot Size (WxL)

**14m x 30m**

14M+ LOT WIDTH

SINGLE STOREY



Please note: Some floorplan option combinations may not be possible together. Please speak to a New Home Specialist.  
Base price shown as of 22 January 2025 and is subject to change.

