

Curlew 27

4 2 2

The Curlew 27, designed for a 16m+ block, features 4 bedrooms, 2 bathrooms, and 2 living areas. At the entrance of this single-storey home, a versatile sitting room offers a space for hosting or as a study, leading to an open-plan kitchen and alfresco area, ideal for entertaining. This floor plan is distinguished by a dedicated kids' wing, providing peace and privacy. With its thoughtful layout and modern comforts, Curlew 27 stands out as an ideal choice for growing families seeking a balance of communal and private living.

ELEVATE

House Area

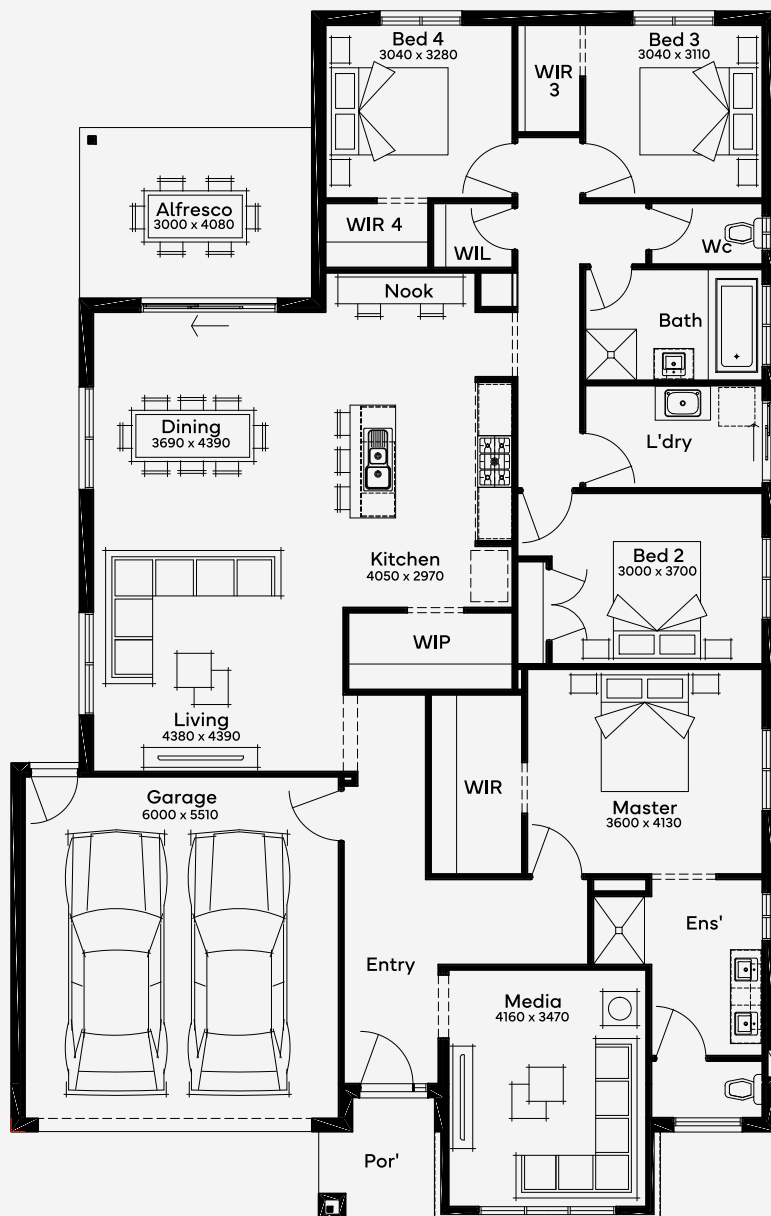
249.35 m²

Min Lot Size (WxL)

16m x 30m

16M+ LOT WIDTH

SINGLE STOREY



Please note: Some floorplan option combinations may not be possible together. Please speak to a New Home Specialist.
Base price shown as of 27 June 2026 and is subject to change.

SIMONDS
How Australia Homes