

Cosgrove 29

 4
  2
  2

INSPIRATIONS

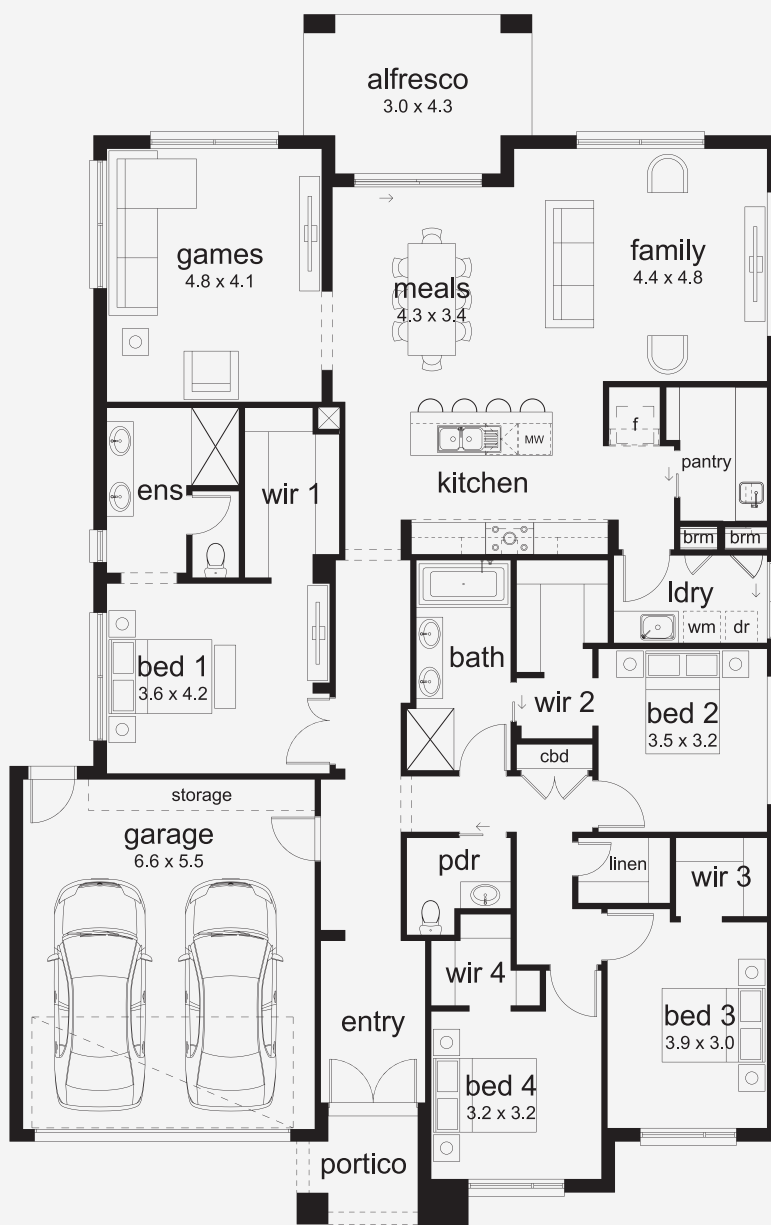
House Area

274 m²

Min Lot Size (WxL)

16m x 30m

Room for Everyone, and Everything The Cosgrove offers the ideal blend of practicality and comfort for modern families. All three kids bedrooms are positioned together, each with a walk-in robe and close to two large hallway linen cupboards - perfect for storing everything from schoolbags to sports gear. A spacious master suite provides a private escape, while the open-plan living, entertainment room and alfresco area ensure the whole family has space to relax and enjoy.



Please note: Some floorplan option combinations may not be possible together. Please speak to a New Home Specialist.
Base price shown as of 08 January 2026 and is subject to change.

SIMONDS
How Australia Homes