

# Cordner 36

5 3 2

ELEVATE

House Area

**333.07 m<sup>2</sup>**

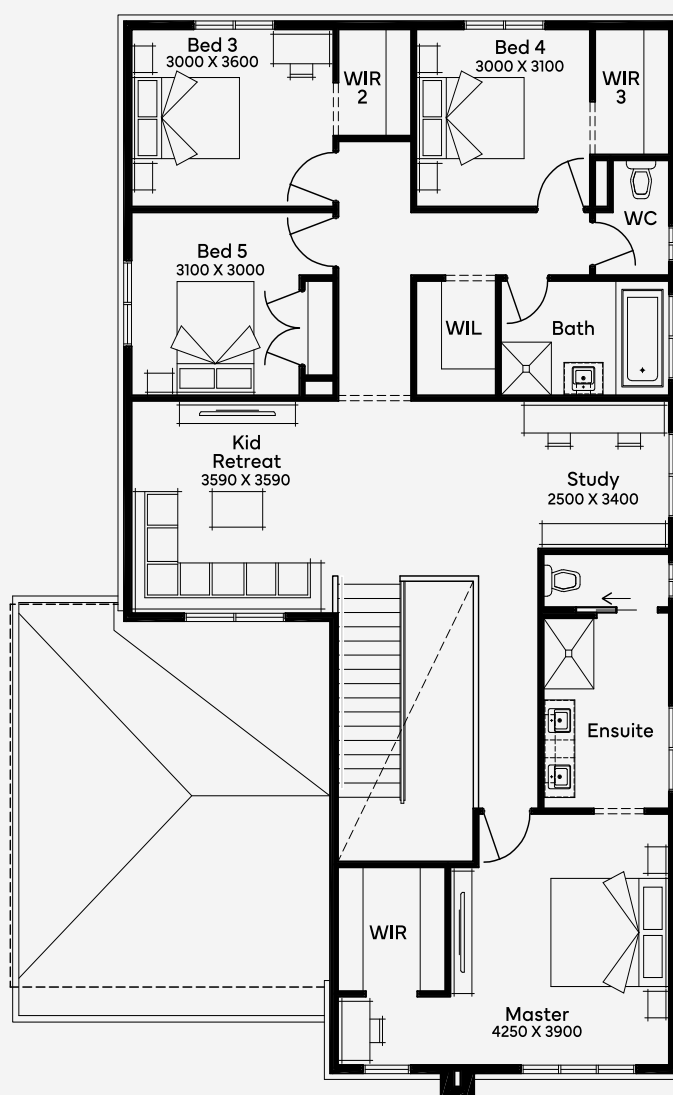
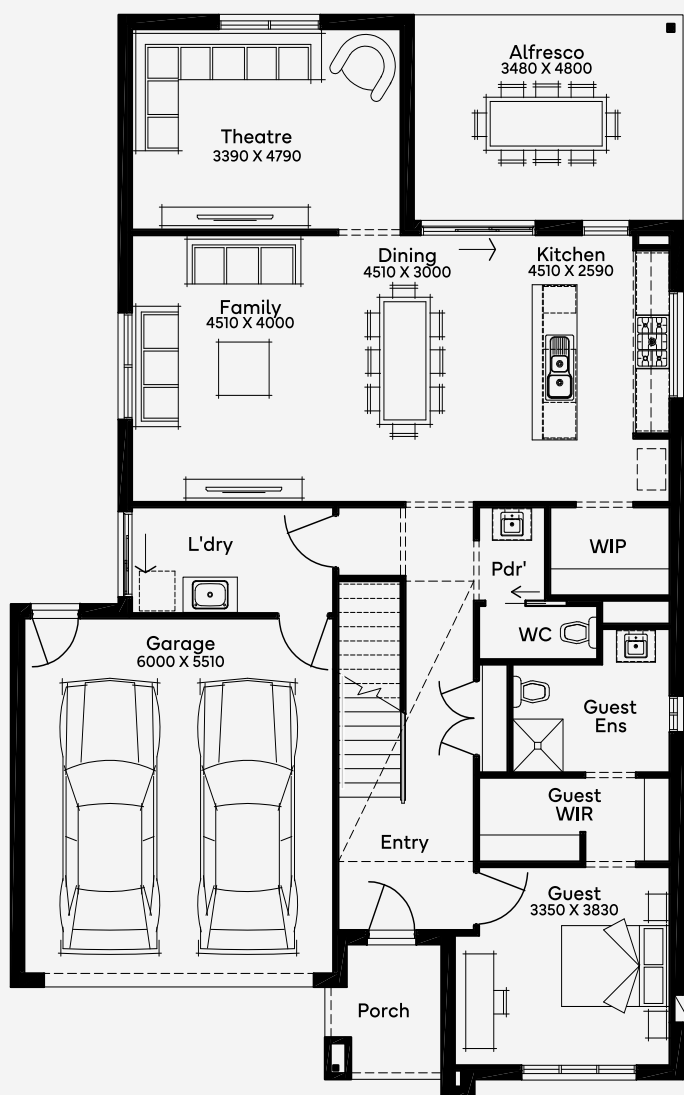
Min Lot Size (WxL)

**14m x 28m**

Designed for 14m+ blocks, the Cordner 36 is a marvel of modern living, featuring 4 bedrooms, 3 bathrooms, and a 2-car garage. This double-storey home embraces open-plan living with a spacious kitchen, complete with a walk-in pantry, flowing into a wide living area and a serene alfresco. A guest bedroom with an ensuite offers a private retreat on the ground floor. Upstairs, the master suite boasts a glamorous ensuite and walk-in wardrobe, providing an adult sanctuary. Three additional bedrooms ensure privacy for children, while a separate study creates an ideal workspace. The Cordner 36 masterfully combines communal areas with private retreats, catering to every family member's needs.

14M+ LOT WIDTH

DOUBLE STOREY



Please note: Some floorplan option combinations may not be possible together. Please speak to a New Home Specialist.  
Base price shown as of 14 September 2025 and is subject to change.

**SIMONDS**  
How Australia Homes