

Charlton 33



INSPIRATIONS

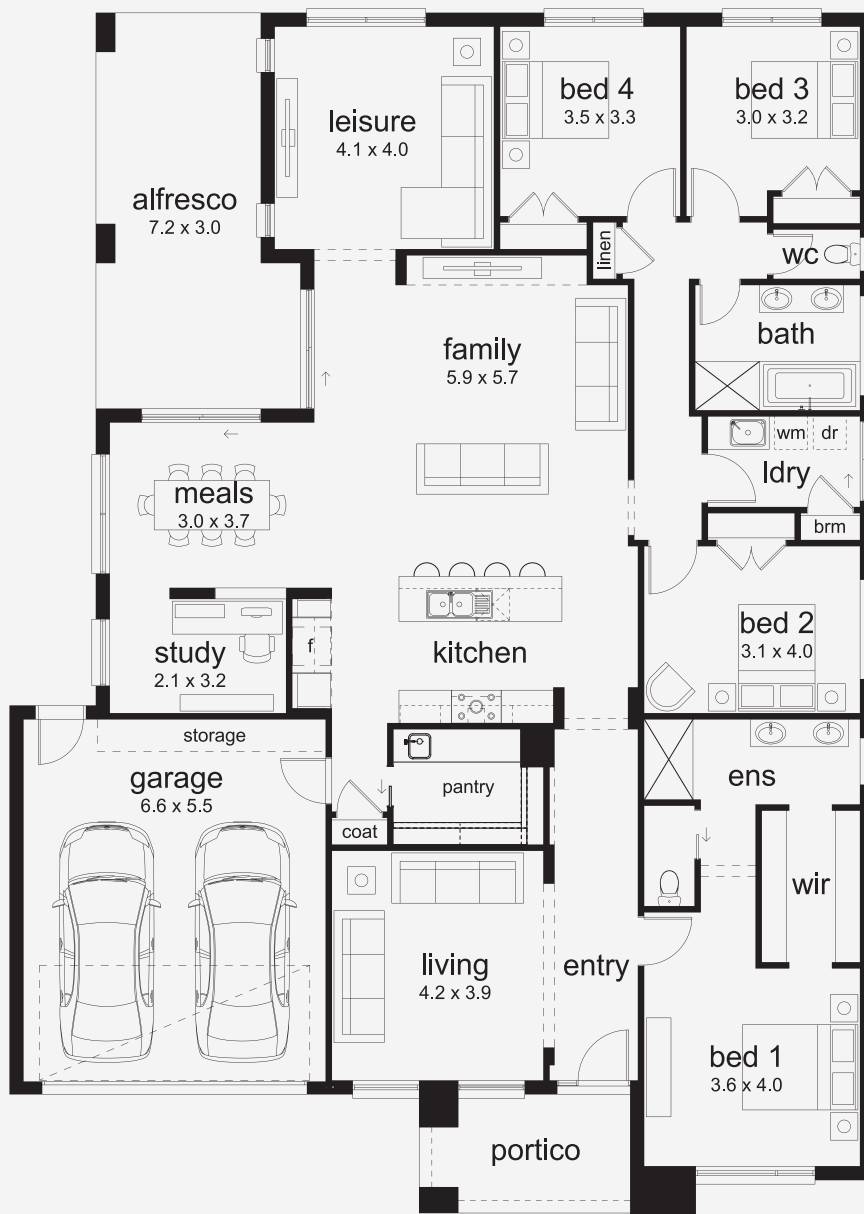
House Area

305.5 m²

Min Lot Size (WxL)

18m x 30m

Flexible Living for Busy Lives Whether it's a quiet evening in or a weekend gathering, the Charlton has you covered. Its generous floorplan features an inviting open-plan zone, a private master suite with ensuite, and additional living spaces that flex with your family's needs. Enjoy the seamless flow out to the alfresco, perfect for entertaining or soaking up the sun.



18M+ LOT WIDTH

SINGLE STOREY

Please note: Some floorplan option combinations may not be possible together. Please speak to a New Home Specialist.
Base price shown as of 11 June 2026 and is subject to change.

