

Charlton 30

4 2 2

A Home That Keeps Up With You The Charlton brings smart design and everyday comfort together. Enjoy the spacious open-plan hub for cooking, dining and relaxing, with additional living spaces that give everyone room to breathe. The master suite is a peaceful escape, while the alfresco is perfect for entertaining, no matter the occasion. It's a home that grows and moves with you.

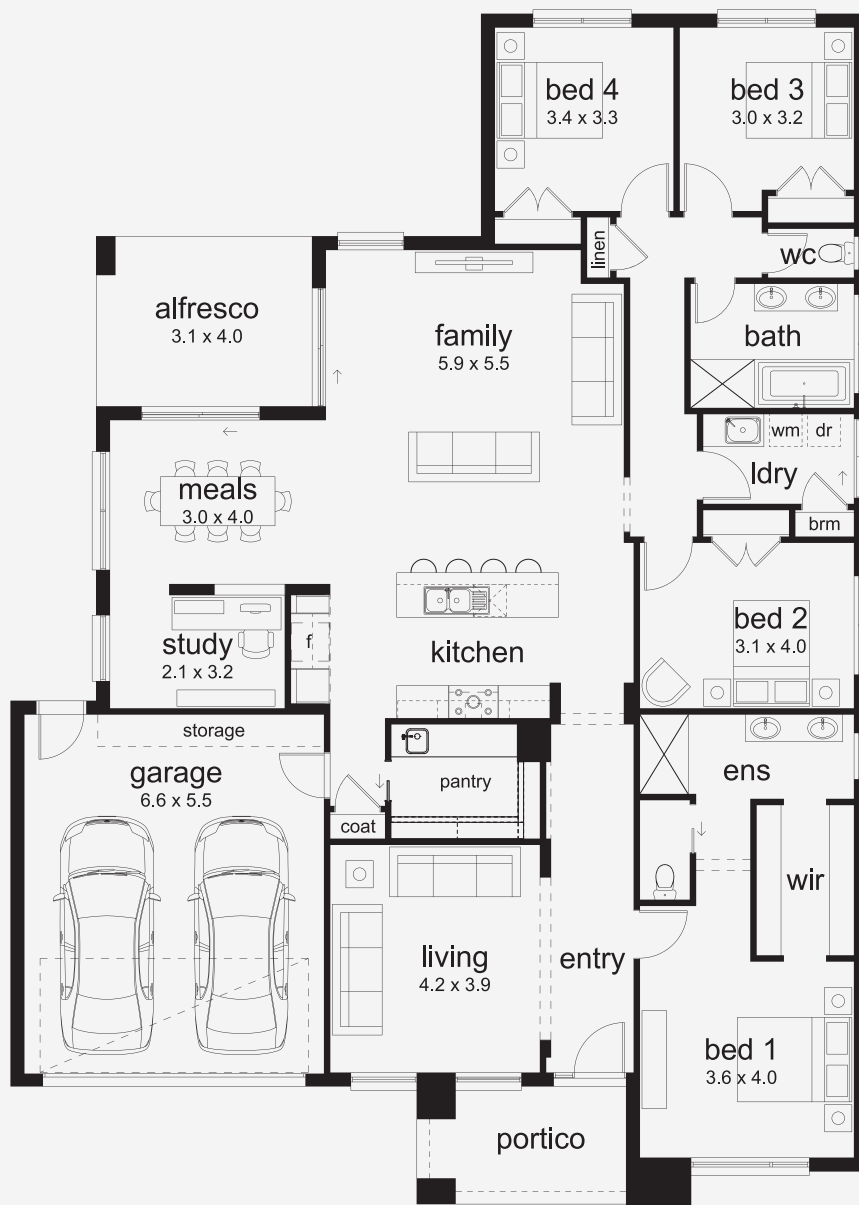
INSPIRATIONS

House Area

276.7 m²

Min Lot Size (WxL)

17m x 30m



17M+ LOT WIDTH

SINGLE STOREY

Please note: Some floorplan option combinations may not be possible together. Please speak to a New Home Specialist.
Base price shown as of 11 June 2026 and is subject to change.