

# Cawley 36

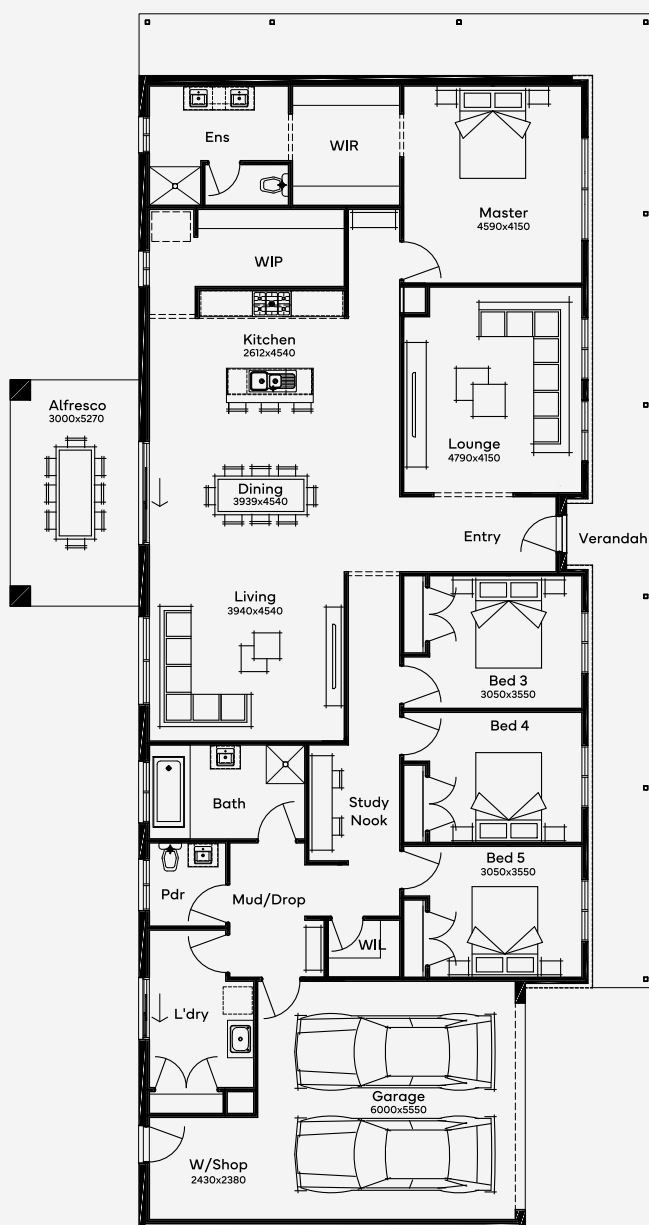
 4
  2
  2

ELEVATE

House Area

**338.33 m<sup>2</sup>**

Step into the Cawley 36, a thoughtfully crafted acreage home that showcases 36 squares of beautifully designed living. The acreage floorplan features 4 generous bedrooms, including a luxurious master bedroom that flows through to a walk-in robe and private ensuite. An open-concept living zone flows seamlessly from a modern kitchen - complete with spacious walk-in pantry - to a large meals and family area, all enhanced by abundant natural light. You'll find a cosy lounge ideal for movie nights overlooking the verandah, while a practical laundry, powder room and main bathroom sit at the opposite end of the home. A workshop space in the 2-car garage adds the finishing touches to this functional layout, highlighting the smart design and flexible spaces that combine for a home as inviting as it is impressive.



Please note: Some floorplan option combinations may not be possible together. Please speak to a New Home Specialist.  
Base price shown as of 29 August 2025 and is subject to change.

**SIMONDS**  
How Australia Homes

30M+ LOT WIDTH

SINGLE STOREY