

Bremer 19



The Bremer 19 house design features a welcoming 4-bedroom, 2-bathroom layout, complemented by a 2-car garage crafted specifically for 10m+ block widths. This floor plan is a masterclass in efficient space utilisation, boasting a seamless flow from the private master suite through to the open-plan family, dining, and kitchen areas, culminating in an inviting alfresco space. Each bedroom is strategically positioned to ensure privacy while maintaining connectivity to the home's heart, making it an ideal setting for both lively family gatherings and tranquil personal retreats.

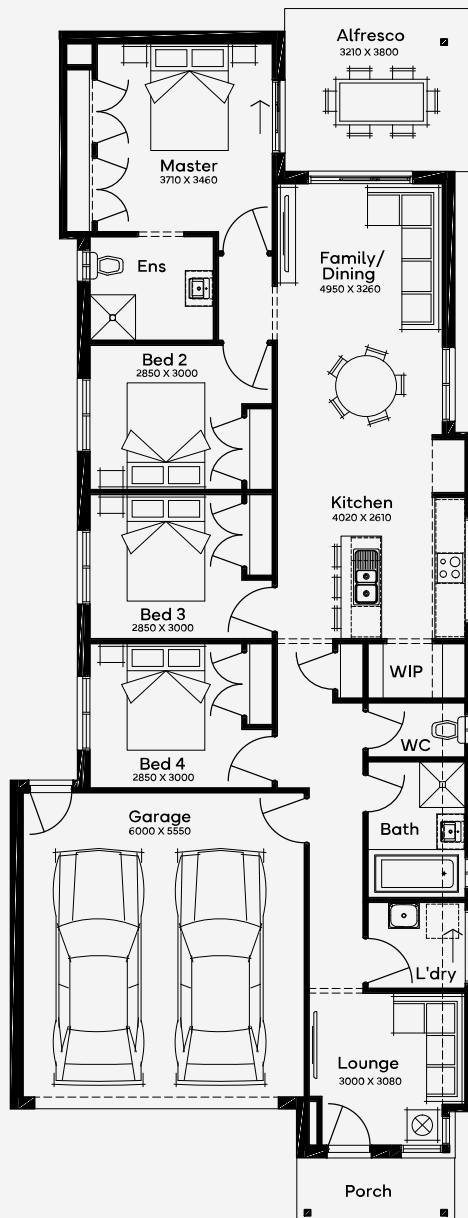
EMERGE

House Area

181.51 m²

Min Lot Size (WxL)

10m x 30m



10M+ LOT WIDTH

SINGLE STOREY

Please note: Some floorplan option combinations may not be possible together. Please speak to a New Home Specialist.

Base price shown as of 22 November 2024 and is subject to change.

SIMONDS
How Australia Homes