

Berrima 28



ELEVATE

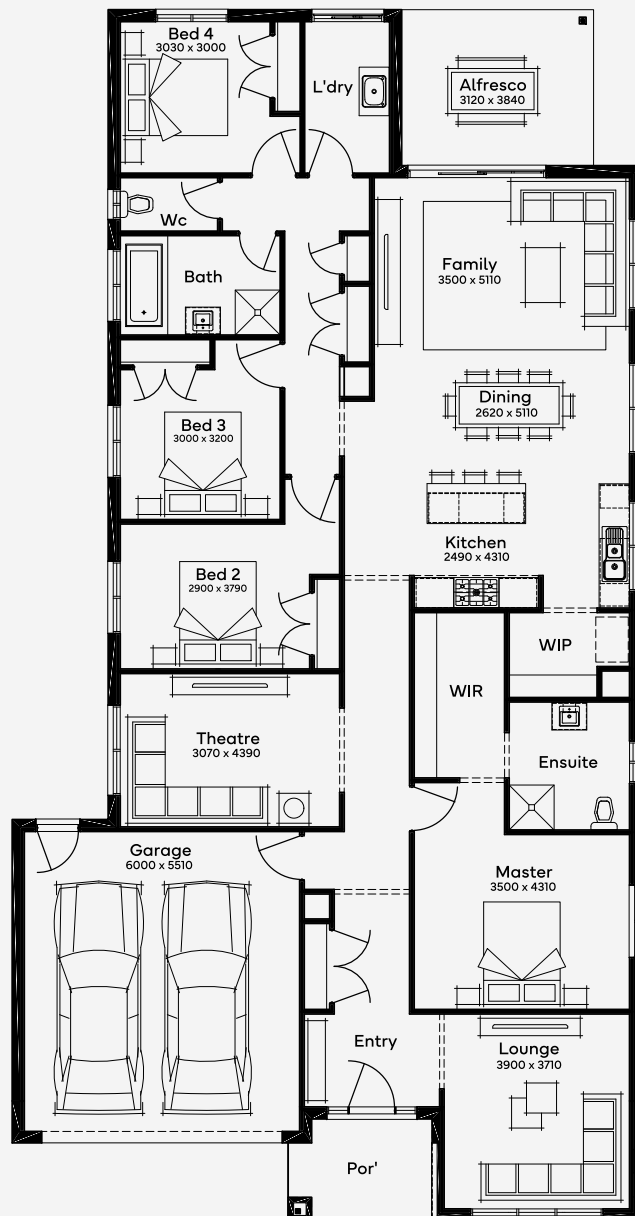
House Area

262.34 m²

Min Lot Size (WxL)

14m x 32m

The Berrima 28, a stylish 4-bedroom, 2-bathroom home with 3 living spaces, epitomises easy living over a single-storey. It features spacious bedrooms, including a main bedroom with a walk-in robe and large ensuite, a theatre room, and an expansive open-plan living and kitchen area. The floor plan, generously proportioned, flows seamlessly to an alfresco area, ideal for entertaining. With its thoughtful design and comfortable spaces, this home makes it easy to feel right at home.



14M+ LOT WIDTH

SINGLE STOREY