

Balsa 28

\$326,500



ELEVATE

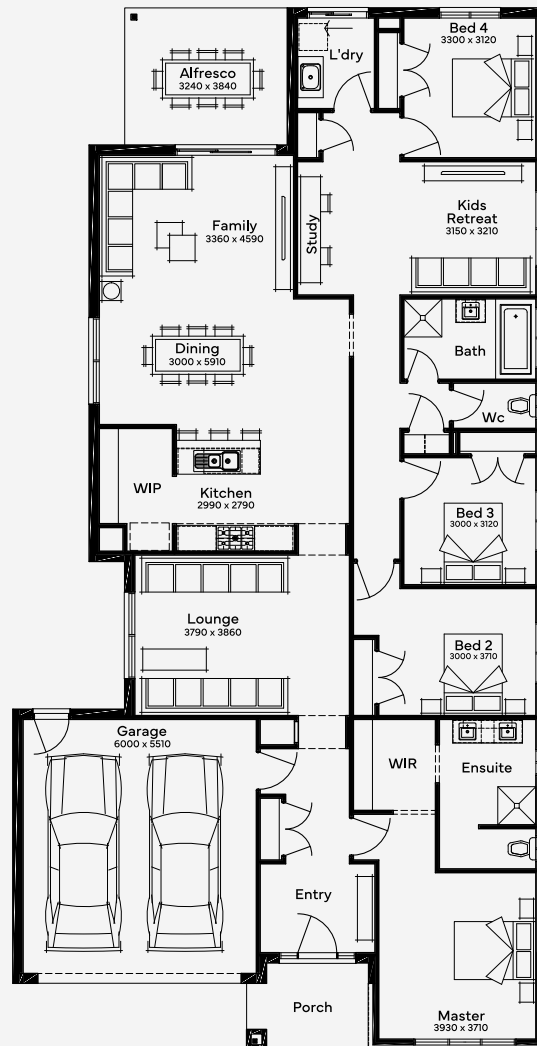
The Balsa 28, a 4-bedroom, 2-bathroom home with 3 living spaces, is designed for every stage of family life. The heart of this single-storey floor plan is the freeform kitchen, living, and dining areas, enhanced by a light trough for added spaciousness. The luxurious and oversized kitchen is perfect for entertaining. Privacy is ensured with the master retreat at the front and a separate kids' wing leading to the alfresco. This social house also focuses on ample storage, making it practical and welcoming.

House Area

265.51 m²

Min Lot Size (WxL)

14m x 32m



Please note: Some floorplan option combinations may not be possible together - please speak to a New Home Specialist.

Base price shown as of 20 May 2024 and is subject to change.

SIMONDS
How Australia Homes

14M+ LOT WIDTH

SINGLE STOREY